



EDGE PROTECTION

133

U-PROFILES

134



CAP RAILS square / rectangular

135 - 141

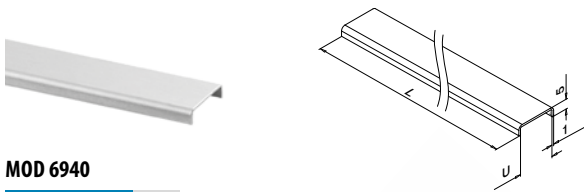


CAP RAILS round

142 - 151

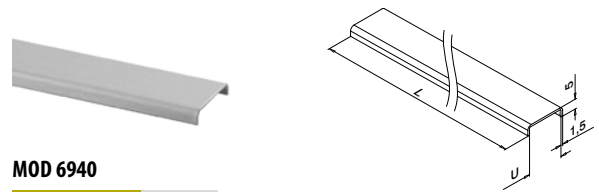


Edge protection profiles



MOD 6940

316	Satin					€/ pc.
OUTDOOR	U	Q	T		L	
146940-025-18-12	18,5	Q-98	16,76 - 17,52		L = 2500 mm	34,05
146940-025-22-12	22,5	Q-99	20,76 - 21,52		L = 2500 mm	35,30
146940-050-14-12	14,5	Q-111	12,76 - 13,52		L = 5000 mm	65,70
146940-050-18-12	18,5	Q-98	16,76 - 17,52		L = 5000 mm	68,15
146940-050-22-12	22,5	Q-99	20,76 - 21,52		L = 5000 mm	70,60
146940-050-26-12	26,5	Q-112	24,76 - 25,52		L = 5000 mm	71,85

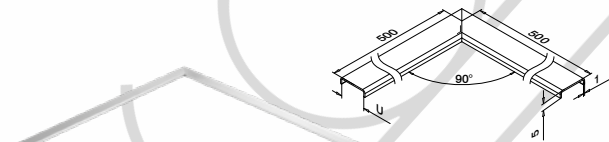


MOD 6940

Aluminium	Mill finish					€/ pc.
OUTDOOR	U	Q	T		L	
166940-050-18-00	18,5	Q-98	16,76 - 17,52		L = 5000 mm	26,65
166940-025-18-18	18,5	Q-98	16,76 - 17,52		L = 2500 mm	14,25
166940-025-22-18	22,5	Q-99	20,76 - 21,52		L = 2500 mm	15,35
166940-050-18-18	18,5	Q-98	16,76 - 17,52		L = 5000 mm	28,35
166940-050-22-18	22,5	Q-99	20,76 - 21,52		L = 5000 mm	30,45



Corners



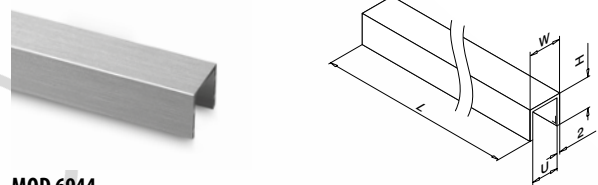
MOD 6340

316	Satin					€/ pc.
OUTDOOR	U	T		L		
146340-500-18	18,5	16,76 (8-0,76-8) - 17,52 (8-1,52-8)	1			33,20
146340-500-22	22,5	20,76 (10-0,76-10) - 21,52 (10-1,52-10)	1			33,75
146340-500-26	26,5	24,76 (12-0,76-12) - 25,52 (12-1,52-12)	1			34,25



Edge protection U-profiles

Square

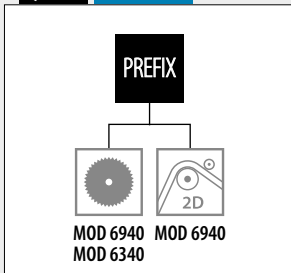


MOD 6944

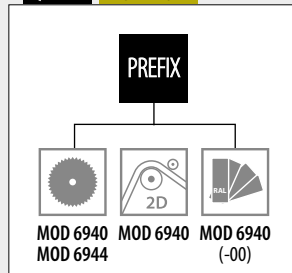
Aluminium	Brushed, anodised					€/ pc.		
OUTDOOR	U	Q	T	W	H		L	
166944-050-13-18	13,25	Q-111	12,76	17,25	15		L = 5000 mm	38,30
166944-050-18-18	18	Q-152	16,76 - 17,52	22	20		L = 5000 mm	49,00
166944-050-22-18	22	Q-152	21,52	26	20		L = 5000 mm	52,50



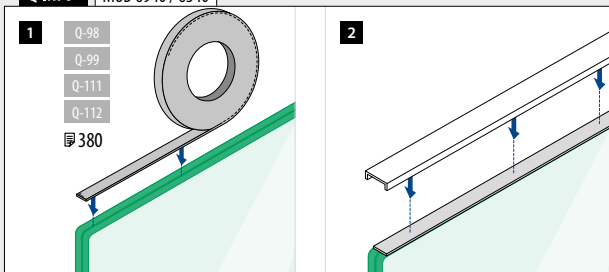
Q-INFO 316



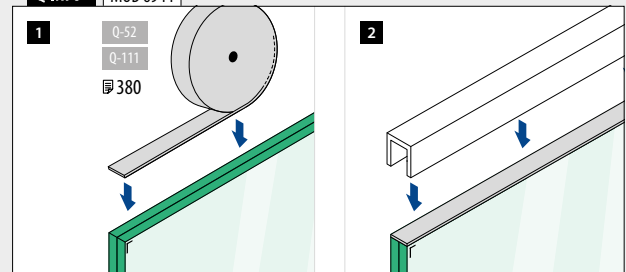
Q-INFO Aluminium



Q-INFO MOD 6940 / 6340



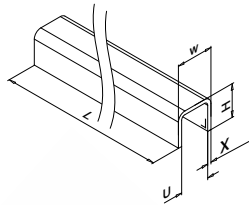
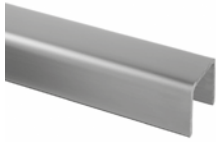
Q-INFO MOD 6944



U-profiles

U-profiles

Square □



MOD 6960

304		Satin							
INDOOR		U	X	T	W	H		€/ pc.	
NEW	136960-050-24-12	24	3	8 - 21,52	30	27	L = 5000 mm	192,00	
316		Satin							
OUTDOOR		U	X	T	W	H		€/ pc.	
	146960-050-24-12	24	3	8 - 21,52	30	27	L = 5000 mm	210,50	
	146960-050-34-12	34	3	8 - 31,52	40	37	L = 5000 mm	295,60	

MOD 6961

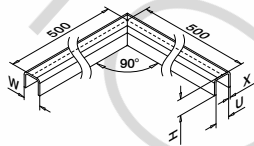
304		Satin							
INDOOR		U	X	T	W	H		€/ pc.	
NEW	136961-050-24-12	24	2	8 - 21,52	28	26	L = 5000 mm	149,75	
316		Satin							
OUTDOOR		U	X	T	W	H		€/ pc.	
NEW	146961-050-24-12	24	2	8 - 21,52	28	26	L = 5000 mm	165,00	
NEW	146961-050-34-12	34	2	8 - 31,52	38	36	L = 5000 mm	229,95	



U-profiles

Corners

Square □



MOD 6360

316		Satin							
OUTDOOR		U	X	T	W	H		€/ pc.	
	146360-24	24	3	8 - 21,52	30	27	1	91,85	
	146360-34	34	3	8 - 31,52	40	37	1	106,10	

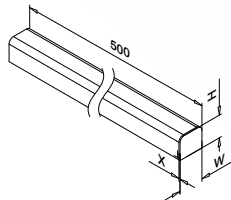
MOD 6361

316		Satin							
OUTDOOR		U	X	T	W	H		€/ pc.	
NEW	146361-24	24	2	8 - 21,52	28	26	1	91,85	
NEW	146361-34	34	2	8 - 31,52	38	36	1	106,10	

U-profiles

End caps

Square □



MOD 6365

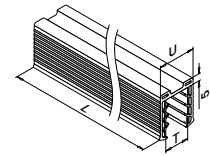
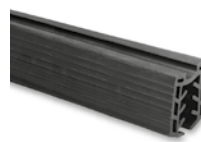
316		Satin							
OUTDOOR		U	X	T	W	H		€/ pc.	
	146365-24	24	3	8 - 21,52	30	27	1	34,90	
	146365-34	34	3	8 - 31,52	40	37	1	39,40	

MOD 6366

316		Satin							
OUTDOOR		U	X	T	W	H		€/ pc.	
NEW	146366-24	24	2	8 - 21,52	28	26	1	34,90	
NEW	146366-34	34	2	8 - 31,52	38	36	1	39,40	

U-profiles

Rubber inlays



MOD 5124

Accessories					
U = 24 mm		T		€/ pc.	
Monolithic		8 - 10	L = 5000 mm	40,40	
	205124-050-08	8 - 10	L = 5000 mm	40,40	
	205124-050-11	12	L = 5000 mm	40,40	
	205124-050-15	15	L = 5000 mm	40,40	
	205124-050-19	19	L = 5000 mm	40,40	

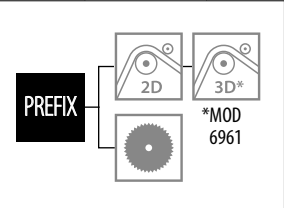
Laminated		T		€/ pc.	
	205124-050-08	8,76 (4-0,76-4) - 10,76 (5-0,76-5)	L = 5000 mm	40,40	
	205124-050-11	11,52 (5-1,52-5) - 13,52 (6-1,52-6)	L = 5000 mm	40,40	
	205124-050-17	16,76 (8-0,76-8) - 17,52 (8-1,52-8)	L = 5000 mm	40,40	
	205124-050-22	20,76 (10-0,76-10) - 21,52 (10-1,52-10)	L = 5000 mm	40,40	

MOD 5134

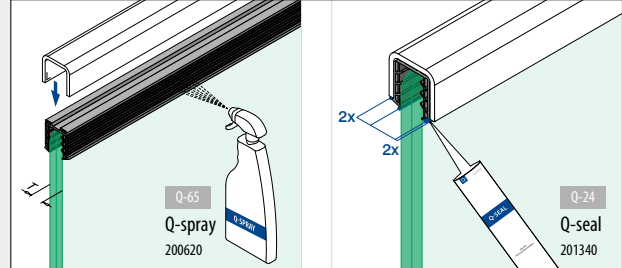
Accessories					
U = 34 mm		T		€/ pc.	
Monolithic		8 - 10	L = 5000 mm	40,40	
	205134-050-08	8 - 10	L = 5000 mm	40,40	
	205134-050-11	12	L = 5000 mm	40,40	
	205134-050-19	19	L = 5000 mm	40,40	

Laminated		T		€/ pc.	
	205134-050-08	8,76 (4-0,76-4) - 10,76 (5-0,76-5)	L = 5000 mm	40,40	
	205134-050-11	11,52 (5-1,52-5) - 13,52 (6-1,52-6)	L = 5000 mm	40,40	
	205134-050-17	16,76 (8-0,76-8) - 17,52 (8-1,52-8)	L = 5000 mm	40,40	
	205134-050-22	20,76 (10-0,76-10) - 21,52 (10-1,52-10)	L = 5000 mm	40,40	
	205134-050-24	24,76 (12-0,76-12) - 25,52 (12-1,52-12)	L = 5000 mm	40,40	
	205134-050-32	31,52 (15-1,52-15)	L = 5000 mm	40,40	

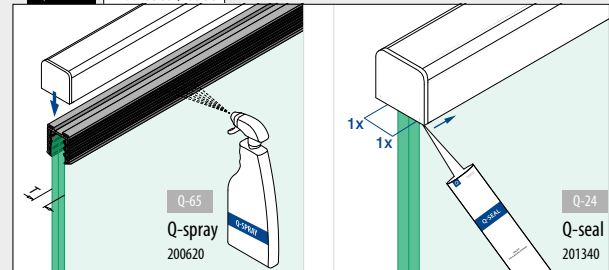
Q-INFO MOD 6960 / 6961



Q-INFO MOD 6960 / 6961 / 6360 / 6361

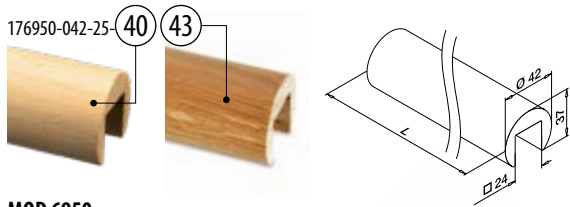


Q-INFO MOD 6365 / 6366



Handrails

Cap rails



MOD 6950

Beech	Lacquered		€/ pc.
INDOOR			
176950-042-25-40		L = 2500 mm	74,40
Oak	Lacquered		€/ pc.
INDOOR			
176950-042-25-43		L = 2500 mm	164,75

PREFIX

Handrails

Connectors



MOD 6791

304	Satin		€/ pc.
INDOOR			
176791-042	∅ 42,0	QS-49 375	2 9,05



Handrails

End caps



MOD 6729

304	Satin		€/ pc.
INDOOR			
176729-042		QS-49 375	2 7,40



Wood is a natural product. Colours can differ.

Handrails

Rubber inlays



MOD 5124

Accessories			
U = 24 mm			
Monolithic	T		€/ pc.
205124-050-08	8 - 10	L = 5000 mm	40,40
205124-050-11	12	L = 5000 mm	40,40
205124-050-15	15	L = 5000 mm	40,40
205124-050-19	19	L = 5000 mm	40,40
Laminated	T		€/ pc.
205124-050-08	8,76 (4-0,76-4) - 10,76 (5-0,76-5)	L = 5000 mm	40,40
205124-050-11	11,52 (5-1,52-5) - 13,52 (6-1,52-6)	L = 5000 mm	40,40
205124-050-17	16,76 (8-0,76-8) - 17,52 (8-1,52-8)	L = 5000 mm	40,40
205124-050-22	20,76 (10-0,76-10) - 21,52 (10-1,52-10)	L = 5000 mm	40,40

Accessories

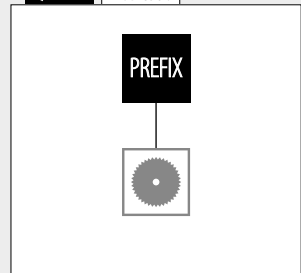
Mounting tool



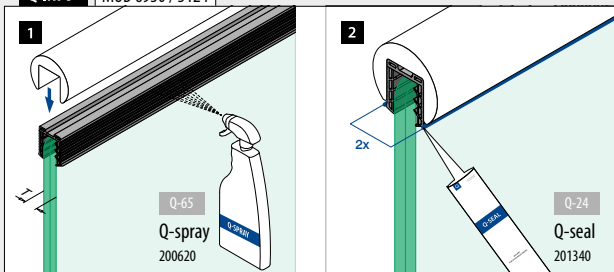
MOD 1024

Accessories			
Q			€/ pc.
201024-042	Q-20	1	5,95

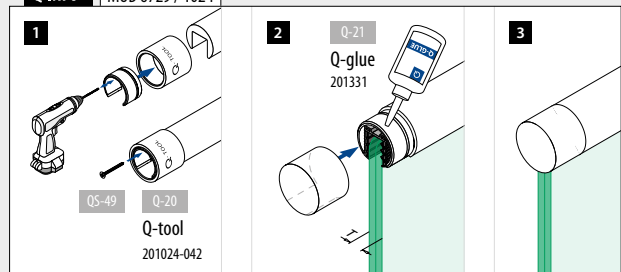
Q-INFO MOD 6950



Q-INFO MOD 6950 / 5124

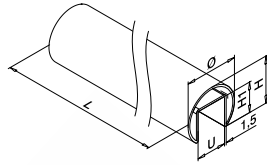
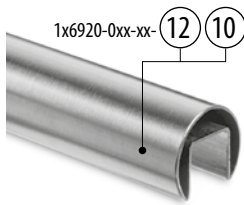


Q-INFO MOD 6729 / 1024



Handrails

Cap rails

**MOD 6920**

Ø 42,4 mm

304		Satin					
INDOOR	U	H	H1		€/ pc.		
136920-042-25-12	24	37	24	L = 2500 mm	79,90		
136920-042-50-12	24	37	24	L = 5000 mm	159,80		
316		Satin					
OUTDOOR	U	H	H1		€/ pc.		
146920-042-50-12	24	37	24	L = 5000 mm	199,80		
316		Mirror polished					
OUTDOOR	U	H	H1		€/ pc.		
146920-042-50-10	24	37	24	L = 5000 mm	284,85		

Ø 48,3 mm

304		Satin					
INDOOR	U	H	H1		€/ pc.		
136920-048-50-12	27	42,6	30	L = 5000 mm	181,15		
316		Satin					
OUTDOOR	U	H	H1		€/ pc.		
146920-048-50-12	27	42,6	30	L = 5000 mm	247,25		

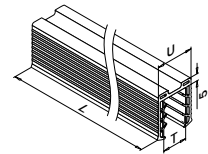
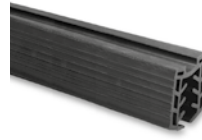
Ø 60,3 mm

304		Satin					
INDOOR	U	H	H1		€/ pc.		
136920-060-50-12	34	53	34	L = 5000 mm	243,45		
316		Satin					
OUTDOOR	U	H	H1		€/ pc.		
146920-060-50-12	34	53	34	L = 5000 mm	328,05		



Handrails

Rubber inlays

**MOD 5124**

Accessories

U = 24 mm

Monolithic	T		€/ pc.
205124-050-08	8 - 10	L = 5000 mm	40,40
205124-050-11	12	L = 5000 mm	40,40
205124-050-15	15	L = 5000 mm	40,40
205124-050-19	19	L = 5000 mm	40,40
205124-250-08	8 - 10	L = 25 m	193,30
205124-250-11	12	L = 25 m	193,30
205124-250-15	15	L = 25 m	193,30
205124-250-19	19	L = 25 m	193,30

Laminated	T		€/ pc.
205124-050-08	8,76 (4-0,76-4) - 10,76 (5-0,76-5)	L = 5000 mm	40,40
205124-050-11	11,52 (5-1,52-5) - 13,52 (6-1,52-6)	L = 5000 mm	40,40
205124-050-17	16,76 (8-0,76-8) - 17,52 (8-1,52-8)	L = 5000 mm	40,40
205124-050-22	20,76 (10-0,76-10) - 21,52 (10-1,52-10)	L = 5000 mm	40,40

205124-250-08	8,76 (4-0,76-4) - 10,76 (5-0,76-5)	L = 25 m	193,30
205124-250-11	11,52 (5-1,52-5) - 13,52 (6-1,52-6)	L = 25 m	193,30
205124-250-17	16,76 (8-0,76-8) - 17,52 (8-1,52-8)	L = 25 m	193,30
205124-250-22	20,76 (10-0,76-10) - 21,52 (10-1,52-10)	L = 25 m	193,30

MOD 5127

Accessories

U = 27 mm

Monolithic	T		€/ pc.
205127-050-08	8 - 10	L = 5000 mm	40,40
205127-050-11	12	L = 5000 mm	40,40
205127-050-15	15	L = 5000 mm	40,40
205127-050-19	19	L = 5000 mm	40,40

Laminated	T		€/ pc.
205127-050-08	8,76 (4-0,76-4) - 10,76 (5-0,76-5)	L = 5000 mm	40,40
205127-050-11	11,52 (5-1,52-5) - 13,52 (6-1,52-6)	L = 5000 mm	40,40
205127-050-15	16,76 (8-0,76-8) - 17,52 (8-1,52-8)	L = 5000 mm	40,40
205127-050-22	20,76 (10-0,76-10) - 21,52 (10-1,52-10)	L = 5000 mm	40,40
205127-050-24	24,76 (12-0,76-12) - 25,52 (12-1,52-12)	L = 5000 mm	40,40

MOD 5134

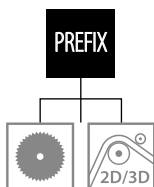
Accessories

U = 34 mm

Monolithic	T		€/ pc.
205134-050-08	8 - 10	L = 5000 mm	40,40
205134-050-11	12	L = 5000 mm	40,40
205134-050-19	15	L = 5000 mm	40,40

Laminated	T		€/ pc.
205134-050-08	8,76 (4-0,76-4) - 10,76 (5-0,76-5)	L = 5000 mm	40,40
205134-050-11	11,52 (5-1,52-5) - 13,52 (6-1,52-6)	L = 5000 mm	40,40
205134-050-17	16,76 (8-0,76-8) - 17,52 (8-1,52-8)	L = 5000 mm	40,40
205134-050-22	20,76 (10-0,76-10) - 21,52 (10-1,52-10)	L = 5000 mm	40,40
205134-050-24	24,76 (12-0,76-12) - 25,52 (12-1,52-12)	L = 5000 mm	40,40
205134-050-32	31,52 (15-1,52-15)	L = 5000 mm	40,40

Q-INFO MOD 6920

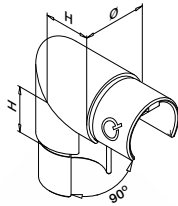


Q-INFO MOD 6920



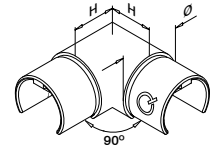
Calculation basis for
tubes, bars and cap rails:
[q-railing.com/
test-calculation](http://q-railing.com/test-calculation)

Connectors



MOD 6303

304		Satin			
INDOOR	Ø	H		€/ pc.	
136303-042-12	42,4 x 1,5	30	2	25,80	



MOD 6313

304		Satin			
INDOOR	Ø	H		€/ pc.	
136313-042-12	42,4 x 1,5	30	2	25,80	
136313-048-12	48,3 x 1,5	35	2	31,60	
136313-060-12	60,3 x 1,5	40	2	42,20	

SELL OUT

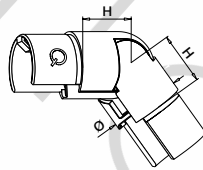
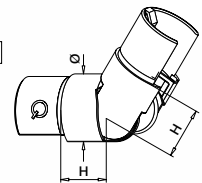
316		Satin			
OUTDOOR	Ø	H		€/ pc.	
146313-042-12	42,4 x 1,5	30	2	28,50	
146313-048-12	48,3 x 1,5	35	2	35,15	
146313-060-12	60,3 x 1,5	40	2	46,80	

316		Mirror polished			
OUTDOOR	Ø	H		€/ pc.	
146313-042-10	42,4 x 1,5	30	2	38,60	



Connectors

Adjustable

25-55°
Downwards25-55°
Upwards

MOD 6302

304		Satin			
INDOOR	Ø	H		€/ pc.	
136302-042-02-12	42,4 x 1,5	30	2	42,45	
136302-048-02-12	48,3 x 1,5	35	2	48,90	
136302-060-02-12	60,3 x 1,5	40	2	57,15	

SELL OUT

316		Satin			
OUTDOOR	Ø	H		€/ pc.	
146302-042-02-12	42,4 x 1,5	30	2	53,10	
146302-048-02-12	48,3 x 1,5	35	2	61,20	
146302-060-02-12	60,3 x 1,5	40	2	68,50	

316		Mirror polished			
OUTDOOR	Ø	H		€/ pc.	
146302-042-02-10	42,4 x 1,5	30	2	59,80	



MOD 6302

304		Satin			
INDOOR	Ø	H		€/ pc.	
136302-042-01-12	42,4 x 1,5	30	2	42,45	
136302-048-01-12	48,3 x 1,5	35	2	48,90	
136302-060-01-12	60,3 x 1,5	40	2	57,15	

SELL OUT

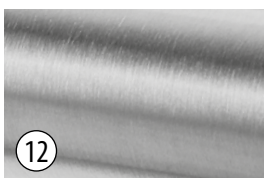
316		Satin			
OUTDOOR	Ø	H		€/ pc.	
146302-042-01-12	42,4 x 1,5	30	2	53,10	
146302-048-01-12	48,3 x 1,5	35	2	61,20	
146302-060-01-12	60,3 x 1,5	40	2	68,50	

316		Mirror polished			
OUTDOOR	Ø	H		€/ pc.	
146302-042-01-10	42,4 x 1,5	30	2	59,80	



SELL OUT Only while supplies last.

Q-INFO 304 316 MOD 6920 / 6302 / 6313



12

Satin

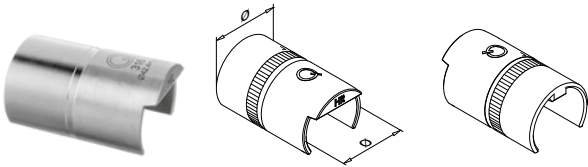


10

Mirror polished

Handrails

Connectors



MOD 6792 - EASY HIT®

304 Raw				
INDOOR	Ø		€/pc.	
136792-042	for 42,4 x 1,5	2	12,20	
136792-048	for 48,3 x 1,5	2	13,80	
316 Raw				
OUTDOOR	Ø		€/pc.	
146792-042	for 42,4 x 1,5	2	13,95	
146792-048	for 48,3 x 1,5	2	15,65	
146792-060	for 60,3 x 1,5	2	23,75	



MOD 6790

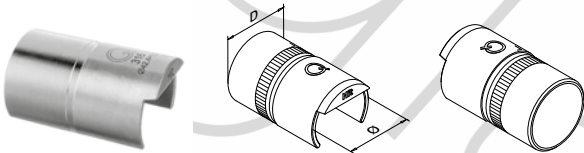
304 Satin				
INDOOR	Ø		€/pc.	
136790-042-12	for 42,4 x 1,5	2	12,20	
136790-048-12	for 48,3 x 1,5	2	13,80	
136790-060-12	for 60,3 x 1,5	2	17,00	
316 Satin				
OUTDOOR	Ø		€/pc.	
146790-042-12	for 42,4 x 1,5	2	13,95	
146790-048-12	for 48,3 x 1,5	2	15,65	
316 Mirror polished				
OUTDOOR	Ø		€/pc.	
146790-042-10	for 42,4 x 1,5	2	16,80	

SELL OUT



Handrails

Cap rail to tube connector



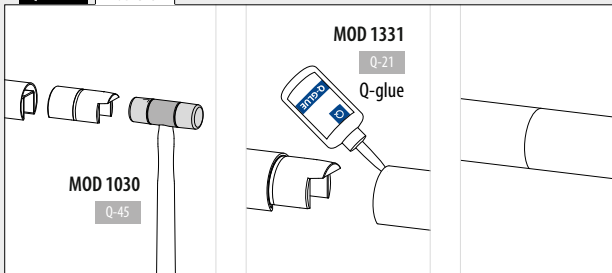
MOD 5793 - EASY HIT®

316 Raw				
OUTDOOR	D	Ø	€/pc.	
145793-042	for 42,4 x 2,0 mm	42,4 x 1,5 mm	2	14,95
145793-048	for 48,3 x 2,0 mm	48,3 x 1,5 mm	2	15,95

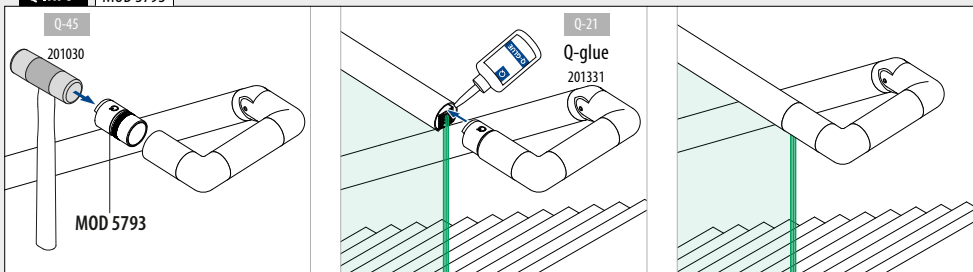


International Design Model Protection

Q-INFO MOD 6792

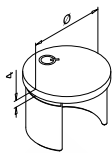


Q-INFO MOD 5793



SELL OUT Only while supplies last.

End caps

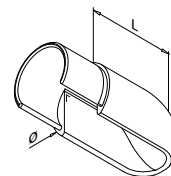


MOD 6732

304 Satin				
INDOOR	Ø		€/ pc.	
136732-042-12	42,4 x 1,5	2	9,30	
136732-048-12	48,3 x 1,5	2	10,50	
136732-060-12	60,3 x 1,5	2	13,20	
316 Satin				
OUTDOOR	Ø		€/ pc.	
146732-042-12	42,4 x 1,5	2	10,65	
146732-048-12	48,3 x 1,5	2	12,30	
146732-060-12	60,3 x 1,5	2	15,50	
316 Mirror polished				
OUTDOOR	Ø		€/ pc.	
146732-042-10	42,4 x 1,5	2	12,85	



End scrolls



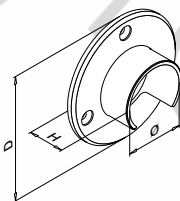
MOD 6738

304 Satin				
INDOOR	Ø	L	€/ pc.	
136738-042-12	42,4 x 1,5	60	19,40	
136738-048-12	48,3 x 1,5	65	25,00	
316 Satin				
OUTDOOR	Ø	L	€/ pc.	
146738-042-12	42,4 x 1,5	60	23,70	



International Design Model Protection

Wall flanges

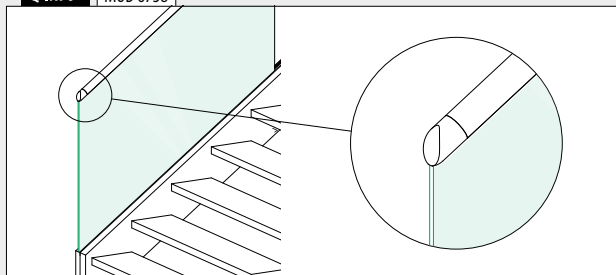


MOD 6505

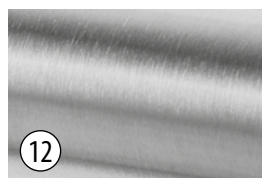
304 Satin						
INDOOR	Ø	D	H	Q5-5	375	€/ pc.
136505-042-12	42,4	90	30	Q5-5	375	13,15
136505-048-12	48,3	95	35	Q5-5	375	15,70
136505-060-12	60,3	107	35	Q5-5	375	21,40
316 Satin						
OUTDOOR	Ø	D	H	Q5-6 <th>375</th> <th>€/ pc.</th>	375	€/ pc.
146505-042-12	42,4	90	30	Q5-6	375	16,45
146505-048-12	48,3	95	35	Q5-6	375	19,75
146505-060-12	60,3	107	35	Q5-6	375	26,95
316 Mirror polished						
OUTDOOR	Ø	D	H	Q5-6 <th>375</th> <th>€/ pc.</th>	375	€/ pc.
146505-042-10	42,4	90	30	Q5-6	375	19,90



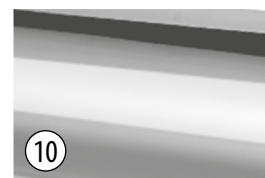
Q-INFO MOD 6738



Q-INFO 304 316 MOD 6732 / 6505



Satin

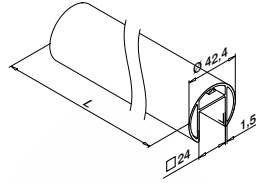
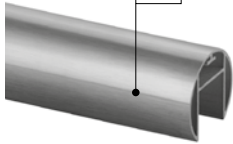


Mirror polished

Handrails

Cap rails

166920-042-50-00 (00) (18)



MOD 6920

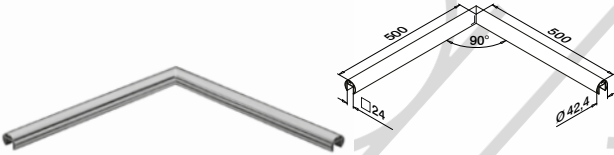
Aluminium	Mill finish	Ø	Box icon	€/ pc.
166920-042-50-00		42,4	L = 5000 mm	105,45
Aluminium	Brushed, anodised	Ø	Box icon	€/ pc.
OUTDOOR				
166920-042-50-18		42,4	L = 5000 mm	126,00



International Design Model Protection

Handrails

Corners



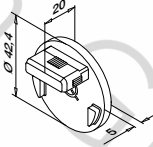
MOD 6320

Aluminium	Mill finish	Ø	Box icon	€/ pc.
166320-042-00		42,4 x 1,5	1	50,10
Aluminium	Brushed, anodised	Ø	Box icon	€/ pc.
OUTDOOR				
166320-042-18		42,4 x 1,5	1	59,80

International Design Model Protection

Handrails

End caps



MOD 6732 - EASY HIT®

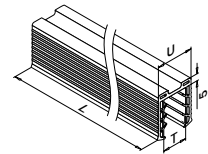
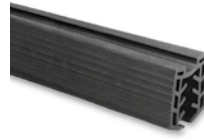
Aluminium	Mill finish	Ø	Box icon	€/ pc.
166732-042-00		for 42,4 x 1,5	2	7,10
Aluminium	Brushed, anodised	Ø	Box icon	€/ pc.
OUTDOOR				
166732-042-18		for 42,4 x 1,5	2	8,40



International Design Model Protection

Handrails

Rubber inlays



MOD 5124

Accessories

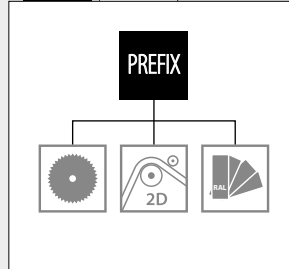
U = 24 mm

Monolithic	T	Box icon	€/ pc.
205124-050-08	8 - 10	L = 5000 mm	40,40
205124-050-11	12	L = 5000 mm	40,40
205124-050-15	15	L = 5000 mm	40,40
205124-050-19	19	L = 5000 mm	40,40
205124-250-08	8 - 10	L = 25 m	193,30
205124-250-11	12	L = 25 m	193,30
205124-250-15	15	L = 25 m	193,30
205124-250-19	19	L = 25 m	193,30

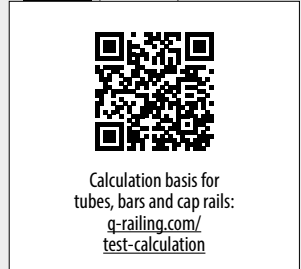
Laminated	T	Box icon	€/ pc.
205124-050-08	8,76 (4-0,76-4) - 10,76 (5-0,76-5)	L = 5000 mm	40,40
205124-050-11	11,52 (5-1,52-5) - 13,52 (6-1,52-6)	L = 5000 mm	40,40
205124-050-17	16,76 (8-0,76-8) - 17,52 (8-1,52-8)	L = 5000 mm	40,40
205124-050-22	20,76 (10-0,76-10) - 21,52 (10-1,52-10)	L = 5000 mm	40,40

205124-250-08	8,76 (4-0,76-4) - 10,76 (5-0,76-5)	L = 25 m	193,30
205124-250-11	11,52 (5-1,52-5) - 13,52 (6-1,52-6)	L = 25 m	193,30
205124-250-17	16,76 (8-0,76-8) - 17,52 (8-1,52-8)	L = 25 m	193,30
205124-250-22	20,76 (10-0,76-10) - 21,52 (10-1,52-10)	L = 25 m	193,30

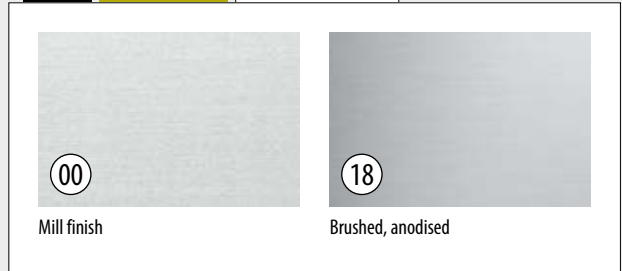
Q-INFO MOD 6920



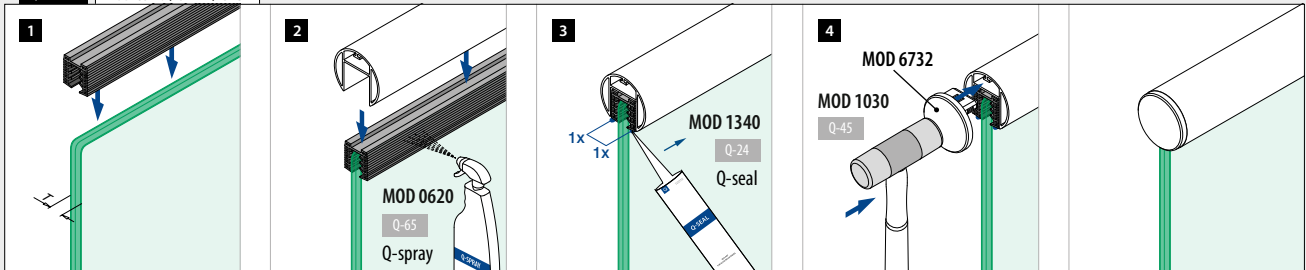
Q-INFO MOD 6920



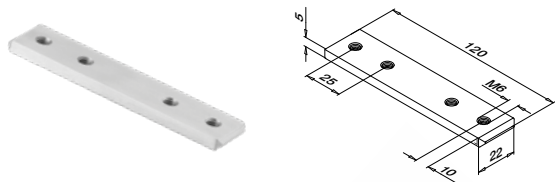
Q-INFO Aluminium MOD 6920 / 6320 / 6732



Q-INFO MOD 6920 / 5124 / 6732



Connectors



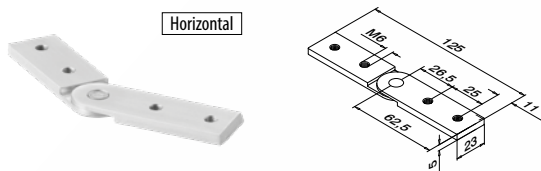
MOD 6795

Aluminium	Mill finish			€/ pc.
166795-339	QS-261	376	2	6,20



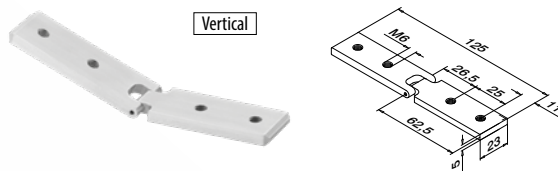
MOD 6311

Aluminium	Mill finish			€/ pc.
166311-339	QS-261	376	2	9,45



MOD 6797

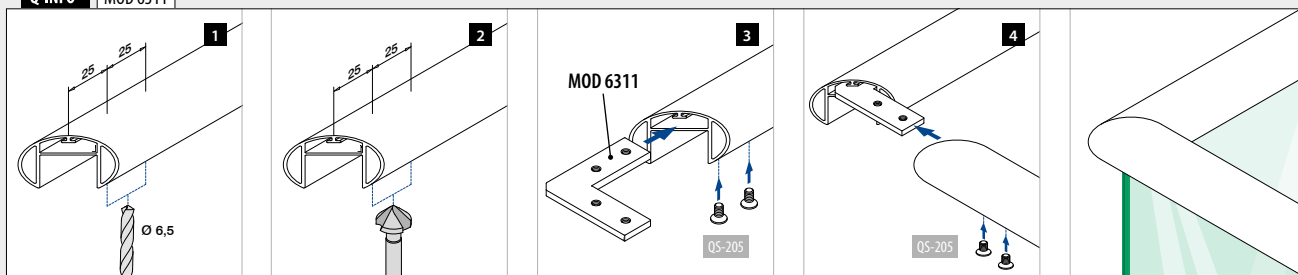
Aluminium	Mill finish			€/ pc.
166797	QS-261	376	2	9,90



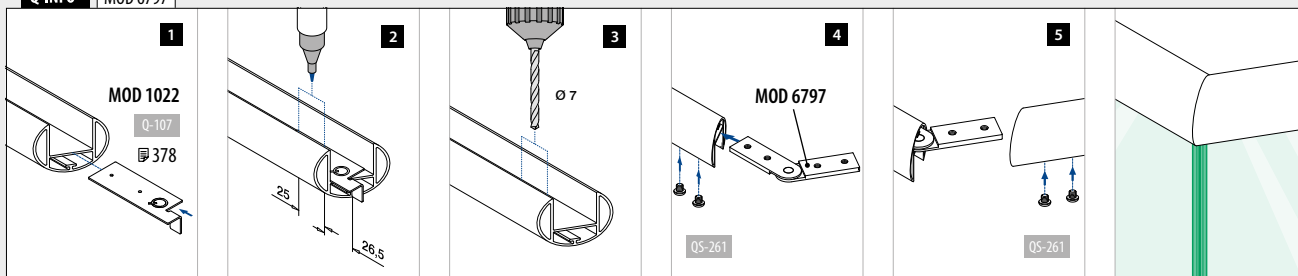
MOD 6798

Aluminium	Mill finish			€/ pc.
166798	QS-261	376	2	9,90

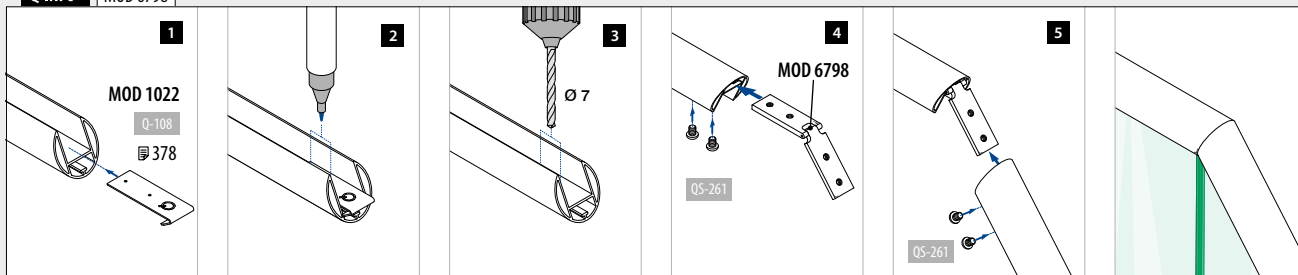
Q-INFO MOD 6311



Q-INFO MOD 6797



Q-INFO MOD 6798



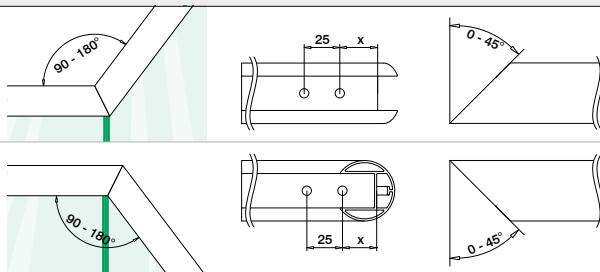
Q-INFO MOD 6798

UPWARDS

Cut	45°	40°	35°	30°	25°	20°	15°	10°	5°	0°
Outer angle	90°	100°	110°	120°	130°	140°	150°	160°	170°	180°
Distance to edge	30,5	30,0	29,5	29,0	28,5	28,0	27,5	27,0	27,0	26,5

DOWNWARDS

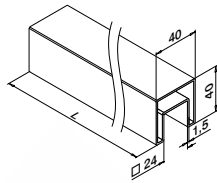
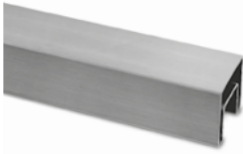
Cut	0°	5°	10°	15°	20°	25°	30°	35°	40°	45°
Inner angle	180°	170°	160°	150°	140°	130°	120°	110°	100°	90°
Distance to edge	26,5	26,5	26,0	26,0	25,5	25,5	25,0	24,5	24,5	24,0



Handrails

Cap rails

Square



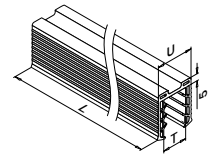
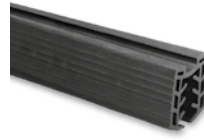
MOD 6924

304 Satin				€/pc.
INDOOR				
136924-040-25-12	40 x 40	<input type="checkbox"/>		L = 2500 mm 112,80
136924-040-50-12	40 x 40	<input type="checkbox"/>		L = 5000 mm 225,60
316 Satin				€/pc.
OUTDOOR				
146924-040-25-12	40 x 40	<input type="checkbox"/>		L = 2500 mm 158,60
146924-040-50-12	40 x 40	<input type="checkbox"/>		L = 5000 mm 317,20



Handrails

Rubber inlays

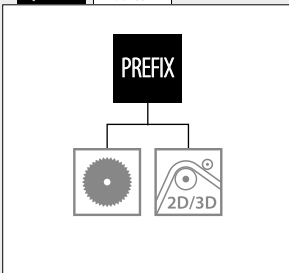


MOD 5124

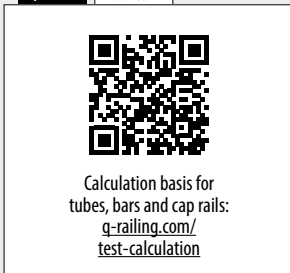
Accessories				€/pc.
U = 24 mm				
Monolithic				
205124-050-08	8 - 10		L = 5000 mm	40,40
205124-050-11	12		L = 5000 mm	40,40
205124-050-15	15		L = 5000 mm	40,40
205124-050-19	19		L = 5000 mm	40,40
Laminated				
205124-050-08	8,76 (4-0,76-4) - 10,76 (5-0,76-5)		L = 5000 mm	40,40
205124-050-11	11,52 (5-1,52-5) - 13,52 (6-1,52-6)		L = 5000 mm	40,40
205124-050-17	16,76 (8-0,76-8) - 17,52 (8-1,52-8)		L = 5000 mm	40,40
205124-050-22	20,76 (10-0,76-10) - 21,52 (10-1,52-10)		L = 5000 mm	40,40
205124-250-08	8 - 10		L = 25 m	193,30
205124-250-11	12		L = 25 m	193,30
205124-250-15	15		L = 25 m	193,30
205124-250-19	19		L = 25 m	193,30



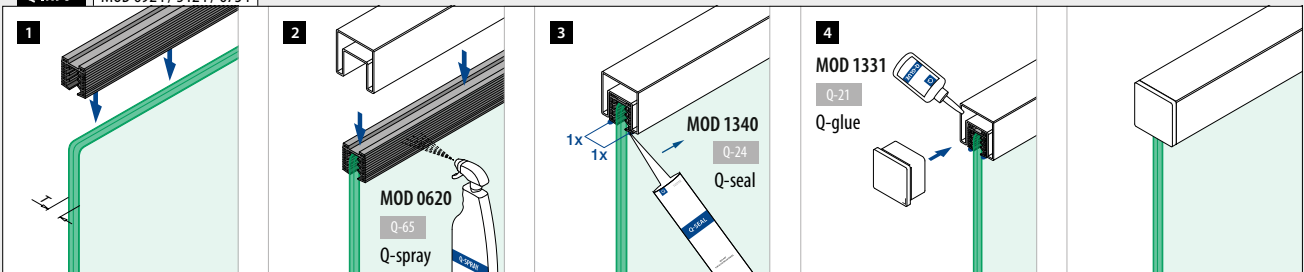
Q-INFO MOD 6924



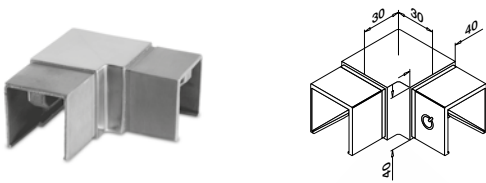
Q-INFO MOD 6924



Q-INFO MOD 6924 / 5124 / 6734



Connectors

Square 

MOD 6343

304 Satin				
INDOOR	<input type="checkbox"/>		€/ pc.	
136343-040-12	40 x 40	2	32,90	
316 Satin				
OUTDOOR	<input type="checkbox"/>		€/ pc.	
146343-040-12	40 x 40	2	38,95	

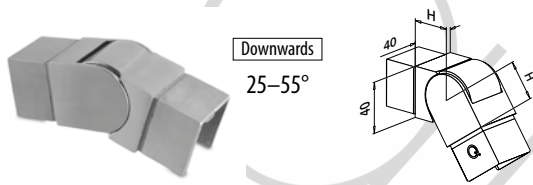


MOD 6794

304 Satin				
INDOOR	<input type="checkbox"/>		€/ pc.	
136794-040-12	40 x 40	2	12,95	
316 Satin				
OUTDOOR	<input type="checkbox"/>		€/ pc.	
146794-040-12	40 x 40	2	16,25	



Connectors

Adjustable Square 

MOD 6342

304 Satin				
INDOOR	<input type="checkbox"/>	H		€/ pc.
136342-040-02-12	40 x 40	30	2	44,45
316 Satin				
OUTDOOR	<input type="checkbox"/>	H		€/ pc.
146342-040-02-12	40 x 40	30	2	56,00



MOD 6342

304 Satin				
INDOOR	<input type="checkbox"/>	H		€/ pc.
136342-040-01-12	40 x 40	30	2	44,45
316 Satin				
OUTDOOR	<input type="checkbox"/>	H		€/ pc.
146342-040-01-12	40 x 40	30	2	56,00



End caps

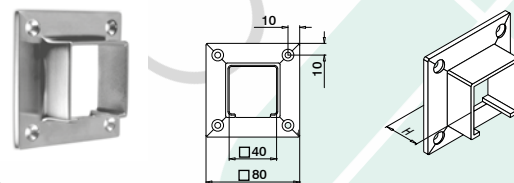
Square 

MOD 6734

304 Satin				
INDOOR	<input type="checkbox"/>		€/ pc.	
136734-040-12	40 x 40	2	11,10	
316 Satin				
OUTDOOR	<input type="checkbox"/>		€/ pc.	
146734-040-12	40 x 40	2	13,90	



Wall flanges

Square 

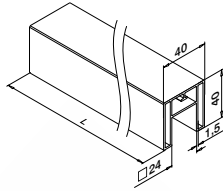
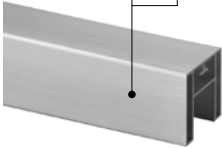
MOD 6545

304 Satin						
INDOOR	<input type="checkbox"/>	H			€/ pc.	
136545-040-12	40 x 40	29	QS-7 375	2	16,40	
316 Satin						
OUTDOOR	<input type="checkbox"/>	H			€/ pc.	
146545-040-12	40 x 40	29	QS-50 375	2	21,20	



Handrails **Cap rails** Square

166924-040-50-00 (00) (18)



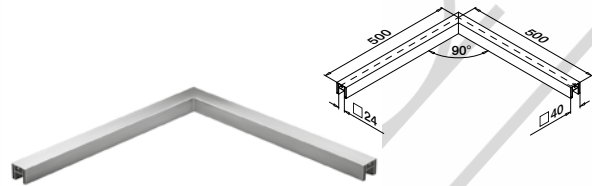
MOD 6924

Aluminium	Mill finish		€/pc.
166924-040-50-00	40 x 40	L = 5000 mm	137,20
Aluminium	Brushed, anodised		€/pc.
166924-040-50-18	40 x 40	L = 5000 mm	158,70



International Design Model Protection

Handrails **Corners** Square



MOD 6324

Aluminium	Brushed, anodised		€/pc.
166324-040-18	40 x 40 x 1,5	1	69,80

Handrails **End caps** Square



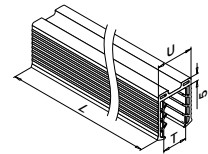
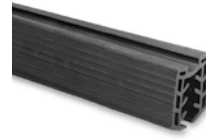
MOD 6734 - EASY HIT®

Aluminium	Mill finish		€/pc.
166734-040-00	40 x 40	2	8,90
Aluminium	Brushed, anodised		€/pc.
166734-040-18	40 x 40	2	10,20



International Design Model Protection

Handrails **Rubber inlays**



MOD 5124

Accessories			
U = 24 mm			
Monolithic	T		€/pc.
205124-050-08	8 - 10	L = 5000 mm	40,40
205124-050-11	12	L = 5000 mm	40,40
205124-050-15	15	L = 5000 mm	40,40
205124-050-19	19	L = 5000 mm	40,40
205124-250-08	8 - 10	L = 25 m	193,30
205124-250-11	12	L = 25 m	193,30
205124-250-15	15	L = 25 m	193,30
205124-250-19	19	L = 25 m	193,30
Laminated	T		€/pc.
205124-050-08	8,76 (4-0,76-4) - 10,76 (5-0,76-5)	L = 5000 mm	40,40
205124-050-11	11,52 (5-1,52-5) - 13,52 (6-1,52-6)	L = 5000 mm	40,40
205124-050-17	16,76 (8-0,76-8) - 17,52 (8-1,52-8)	L = 5000 mm	40,40
205124-050-22	20,76 (10-0,76-10) - 21,52 (10-1,52-10)	L = 5000 mm	40,40
205124-250-08	8,76 (4-0,76-4) - 10,76 (5-0,76-5)	L = 25 m	193,30
205124-250-11	11,52 (5-1,52-5) - 13,52 (6-1,52-6)	L = 25 m	193,30
205124-250-17	16,76 (8-0,76-8) - 17,52 (8-1,52-8)	L = 25 m	193,30
205124-250-22	20,76 (10-0,76-10) - 21,52 (10-1,52-10)	L = 25 m	193,30

Q-INFO MOD 6924

Q-INFO MOD 6924

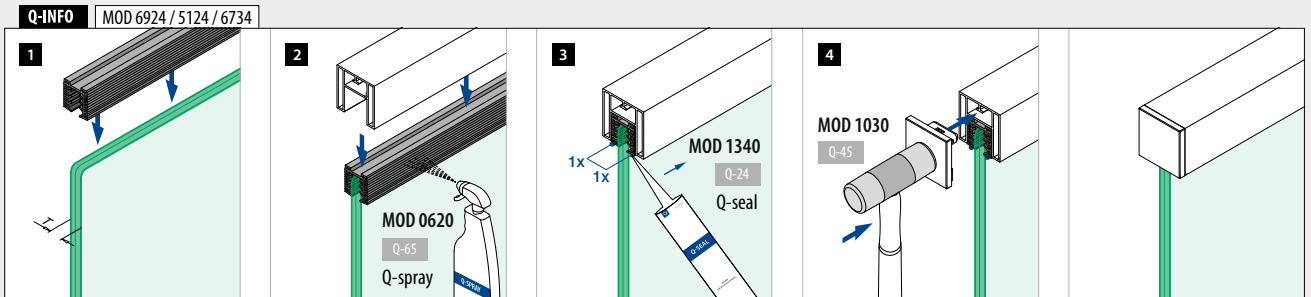
Calculation basis for tubes, bars and cap rails:
q-railing.com/test-calculation

Q-INFO Aluminium MOD 6924 / 6734

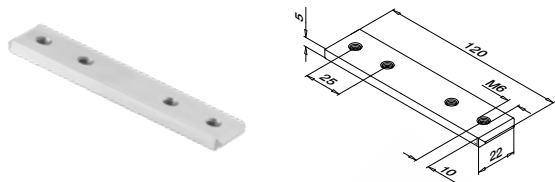
(00) Mill finish

Q-INFO Aluminium MOD 6924 / 6734

(18) Brushed, anodised



Connectors



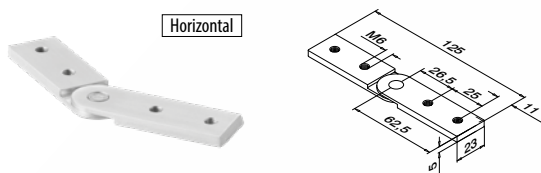
MOD 6795

Aluminium	Mill finish			€/ pc.
166795-339	QS-261	376	2	6,20



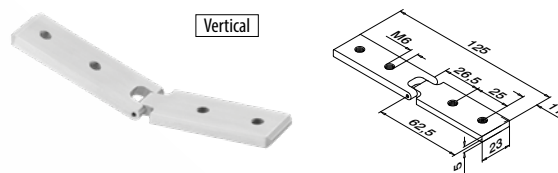
MOD 6311

Aluminium	Mill finish			€/ pc.
166311-339	QS-261	376	2	9,45



MOD 6797

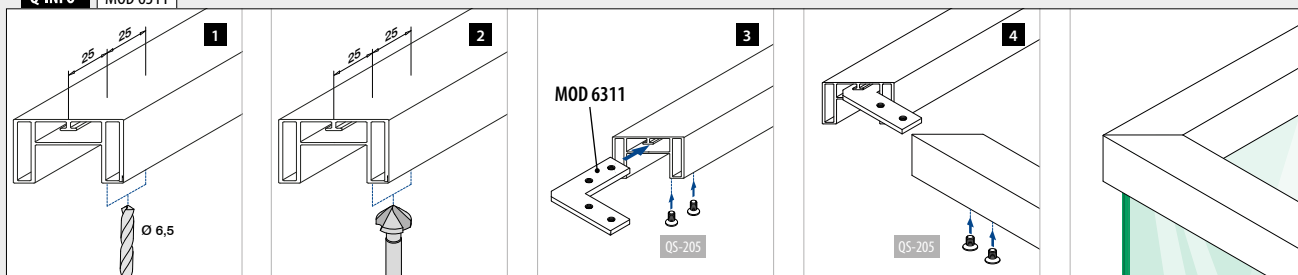
Aluminium	Mill finish			€/ pc.
166797	QS-261	376	2	9,90



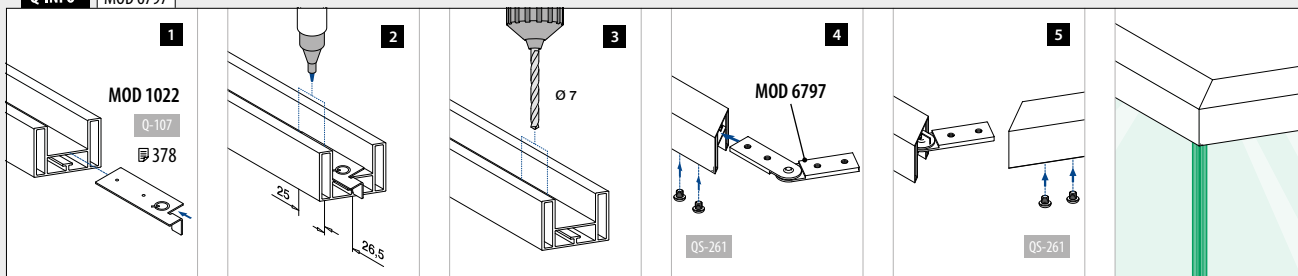
MOD 6798

Aluminium	Mill finish			€/ pc.
166798	QS-261	376	2	9,90

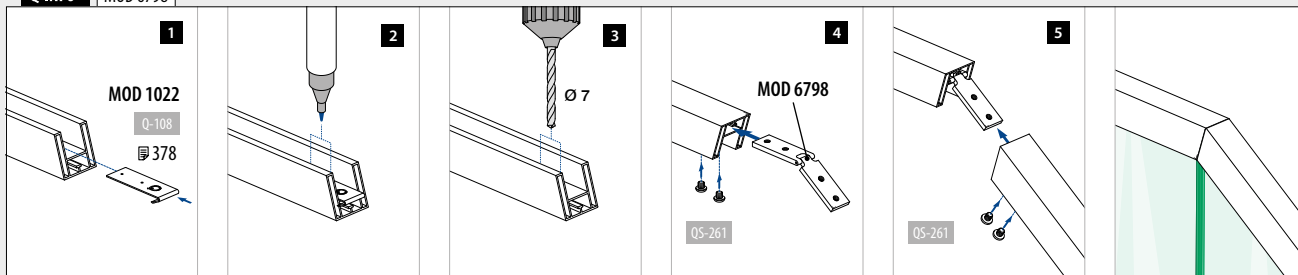
Q-INFO MOD 6311



Q-INFO MOD 6797



Q-INFO MOD 6798



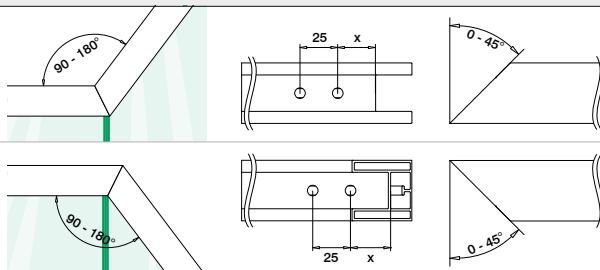
Q-INFO MOD 6798

UPWARDS

Cut	45°	40°	35°	30°	25°	20°	15°	10°	5°	0°
Outer angle	90°	100°	110°	120°	130°	140°	150°	160°	170°	180°
Distance to edge	30,5	30,0	29,5	29,0	28,5	28,0	27,5	27,0	27,0	26,5

DOWNWARDS

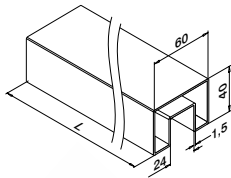
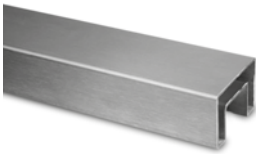
Cut	0°	5°	10°	15°	20°	25°	30°	35°	40°	45°
Inner angle	180°	170°	160°	150°	140°	130°	120°	110°	100°	90°
Distance to edge	26,5	26,5	26,0	26,0	25,5	25,5	25,0	24,5	24,5	24,0



Handrails

Cap rails

Rectangular



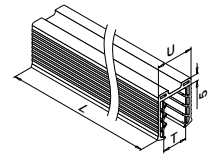
MOD 6924

304	Satin			€/pc.
INDOOR				
136924-640-50-12	60 x 40	<input type="checkbox"/>		L = 5000 mm 299,80
316	Satin			€/pc.
OUTDOOR				
146924-640-50-12	60 x 40	<input type="checkbox"/>		L = 5000 mm 394,40



Handrails

Rubber inlays



MOD 5124

Accessories				
U = 24 mm				
Monolithic	T			€/pc.
205124-050-08	8 - 10		L = 5000 mm	40,40
205124-050-11	12		L = 5000 mm	40,40
205124-050-15	15		L = 5000 mm	40,40
205124-050-19	19		L = 5000 mm	40,40
<hr/>				
205124-250-08	8 - 10		L = 25 m	193,30
205124-250-11	12		L = 25 m	193,30
205124-250-15	15		L = 25 m	193,30
205124-250-19	19		L = 25 m	193,30
<hr/>				
Laminated	T			€/pc.
205124-050-08	8,76 (4-0,76-4) - 10,76 (5-0,76-5)		L = 5000 mm	40,40
205124-050-11	11,52 (5-1,52-5) - 13,52 (6-1,52-6)		L = 5000 mm	40,40
205124-050-17	16,76 (8-0,76-8) - 17,52 (8-1,52-8)		L = 5000 mm	40,40
205124-050-22	20,76 (10-0,76-10) - 21,52 (10-1,52-10)		L = 5000 mm	40,40
<hr/>				
205124-250-08	8,76 (4-0,76-4) - 10,76 (5-0,76-5)		L = 25 m	193,30
205124-250-11	11,52 (5-1,52-5) - 13,52 (6-1,52-6)		L = 25 m	193,30
205124-250-17	16,76 (8-0,76-8) - 17,52 (8-1,52-8)		L = 25 m	193,30
205124-250-22	20,76 (10-0,76-10) - 21,52 (10-1,52-10)		L = 25 m	193,30

Q-INFO MOD 6924



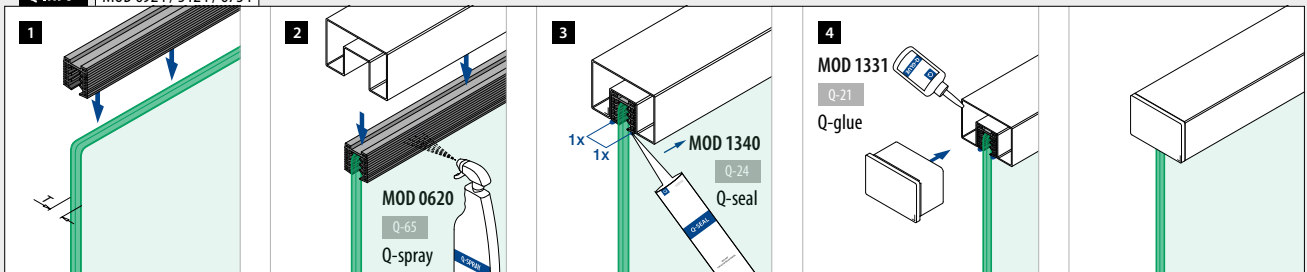
Q-INFO MOD 6924



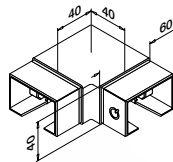
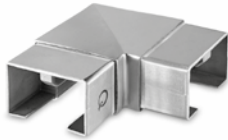
Calculation basis for tubes, bars and cap rails:
q-railling.com/test-calculation

SELL OUT Only while supplies last.

Q-INFO MOD 6924 / 5124 / 6734



Connectors

Rectangular 

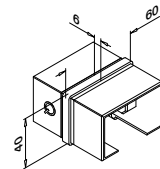
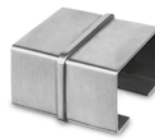
MOD 6343

304 Satin

INDOOR			€ / pc.
SELL OUT 136343-640-12	60 x 40	2	42,45

316 Satin

OUTDOOR			€ / pc.
146343-640-12	60 x 40	2	53,30



MOD 6794

304 Satin

INDOOR			€ / pc.
SELL OUT 136794-640-12	60 x 40	2	14,65

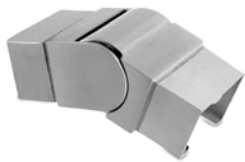
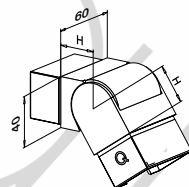
316 Satin

OUTDOOR			€ / pc.
146794-640-12	60 x 40	2	18,35



Connectors

Adjustable

Rectangular 25-55°
Downwards

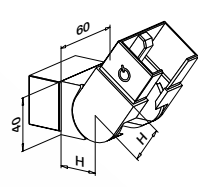
MOD 6342

304 Satin

INDOOR		H		€ / pc.
SELL OUT 136342-640-02-12	60 x 40	30	2	49,20

316 Satin

OUTDOOR		H		€ / pc.
146342-640-02-12	60 x 40	30	2	63,90

25-55°
Upwards

MOD 6342

304 Satin

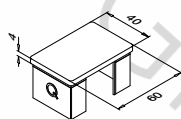
INDOOR		H		€ / pc.
SELL OUT 136342-640-01-12	60 x 40	30	2	49,20

316 Satin

OUTDOOR		H		€ / pc.
146342-640-01-12	60 x 40	30	2	63,90



End caps

Rectangular 

MOD 6734

304 Satin

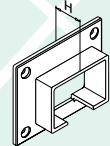
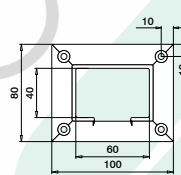
INDOOR			€ / pc.
SELL OUT 136734-640-12	60 x 40	2	13,95

316 Satin

OUTDOOR			€ / pc.
146734-640-12	60 x 40	2	17,40



Wall flanges

Rectangular 

MOD 6545

304 Satin

INDOOR		H		€ / pc.
SELL OUT 136545-640-12	60 x 40	29	QS-7 375	23,50

316 Satin

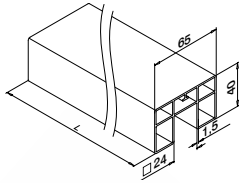
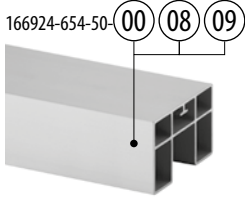
OUTDOOR		H		€ / pc.
146545-640-12	60 x 40	29	QS-50 375	29,40



Handrails

Cap rails

Rectangular



MOD 6924

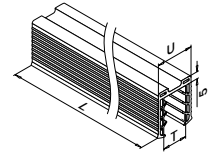
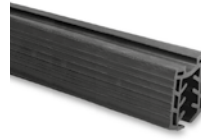
Aluminium	Mill finish		€/pc.
166924-654-50-00	65 x 40	L = 5000 mm	150,55
Aluminium	Matt silver effect, anodised		€/pc.
OUTDOOR			
166924-654-50-08	65 x 40	L = 5000 mm	171,00
Aluminium	Stainless steel effect		€/pc.
OUTDOOR			
166924-654-50-09	65 x 40	L = 5000 mm	185,70



International Design Model Protection

Handrails

Rubber inlays



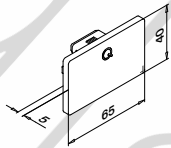
MOD 5124

Accessories			€/pc.
U = 24 mm			
Monolithic	T		€/pc.
205124-050-08	8 - 10	L = 5000 mm	40,40
205124-050-11	12	L = 5000 mm	40,40
205124-050-15	15	L = 5000 mm	40,40
205124-050-19	19	L = 5000 mm	40,40
Laminated	T		€/pc.
205124-050-08	8,76 (4-0,76-4) - 10,76 (5-0,76-5)	L = 5000 mm	40,40
205124-050-11	11,52 (5-1,52-5) - 13,52 (6-1,52-6)	L = 5000 mm	40,40
205124-050-17	16,76 (8-0,76-8) - 17,52 (8-1,52-8)	L = 5000 mm	40,40
205124-050-22	20,76 (10-0,76-10) - 21,52 (10-1,52-10)	L = 5000 mm	40,40

Handrails

End caps

Rectangular



MOD 6734 - EASY HIT®

Aluminium	Mill finish		€/pc.
166734-654-00	65 x 40	2	8,55
Aluminium	Matt silver effect, anodised		€/pc.
OUTDOOR			
166734-654-08	65 x 40	2	10,50
Aluminium	Stainless steel effect		€/pc.
OUTDOOR			
166734-654-09	65 x 40	2	12,45



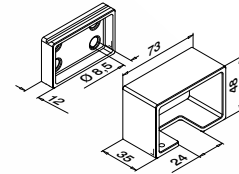
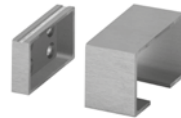
International Design Model Protection

Only while supplies last.

Handrails

Wall flanges

Rectangular



MOD 6545

Aluminium	Mill finish		€/pc.
166545-654-00	for 65 x 40	QS-55 374 / QS-20 376	2 16,10
Aluminium	Stainless steel effect		€/pc.
OUTDOOR			
166545-654-09	for 65 x 40	QS-55 374 / QS-20 376	2 20,95

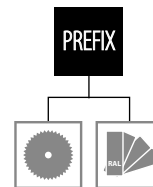


International Design Model Protection

Q-INFO Aluminium MOD 6924 / 6734 / 6545



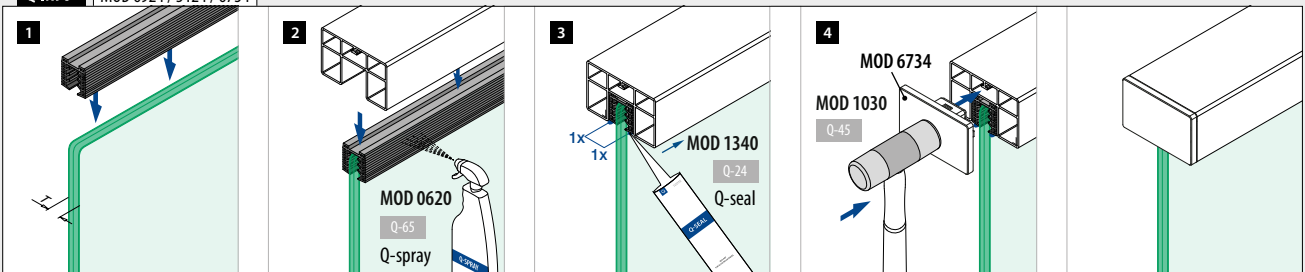
Q-INFO MOD 6924



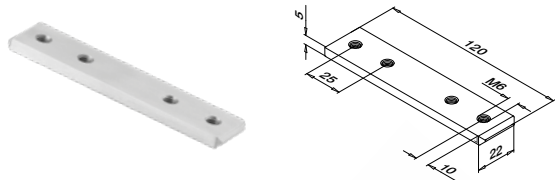
Q-INFO MOD 6924



Q-INFO MOD 6924 / 5124 / 6734



Connectors



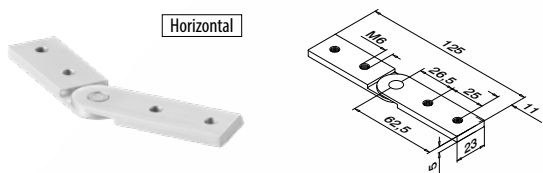
MOD 6795

Aluminium	Mill finish			€/ pc.
166795-339	QS-261	376	2	6,20



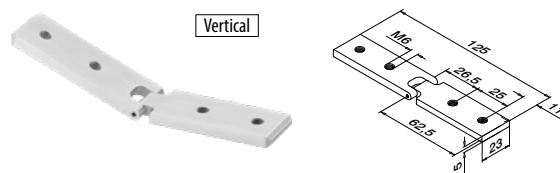
MOD 6311

Aluminium	Mill finish			€/ pc.
166311-339	QS-261	376	2	9,45



MOD 6797

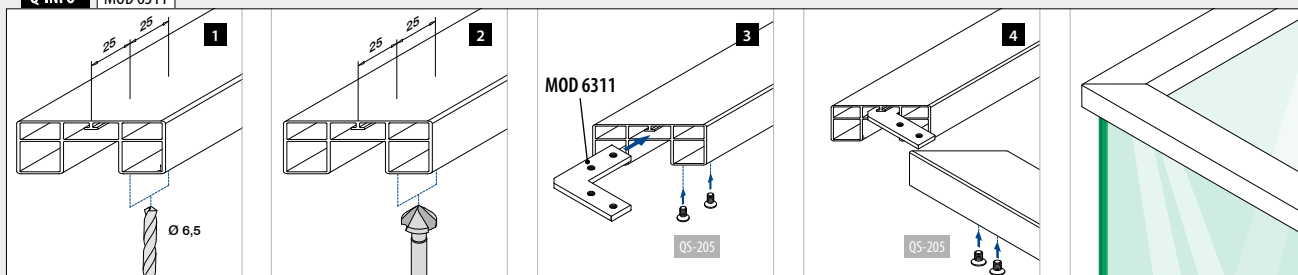
Aluminium	Mill finish			€/ pc.
166797	QS-261	376	2	9,90



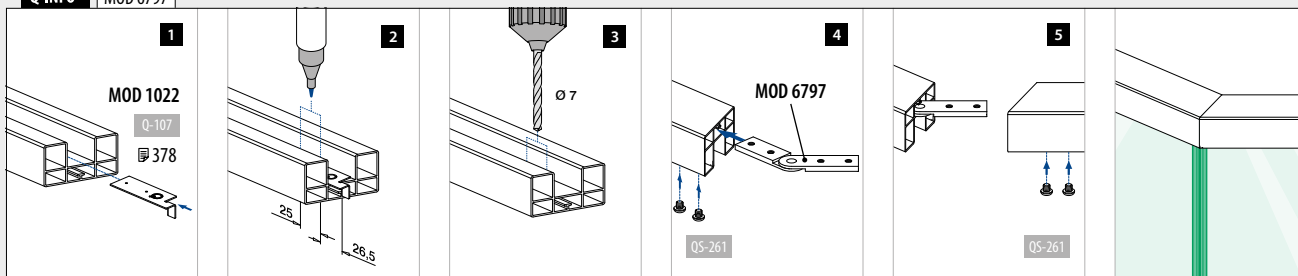
MOD 6798

Aluminium	Mill finish			€/ pc.
166798	QS-261	376	2	9,90

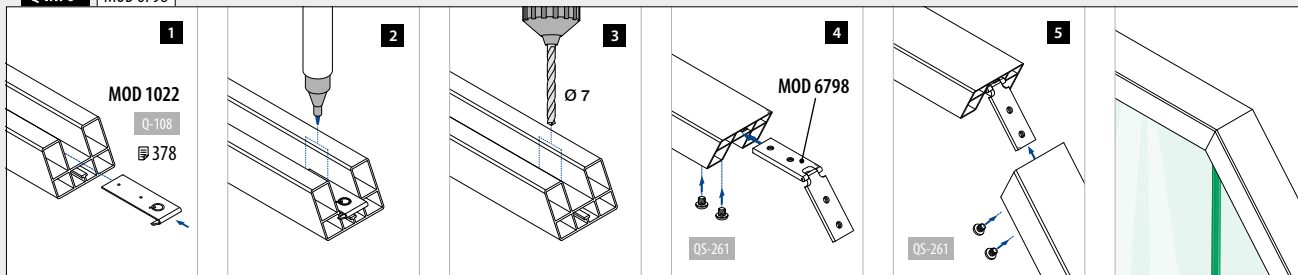
Q-INFO MOD 6311



Q-INFO MOD 6797



Q-INFO MOD 6798



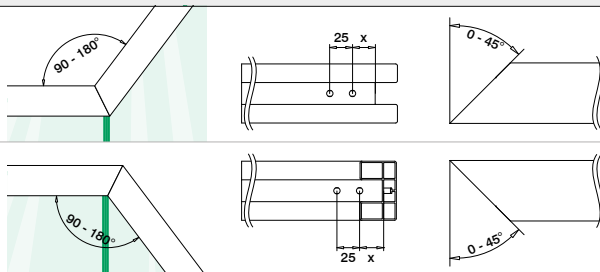
Q-INFO MOD 6798

UPWARDS

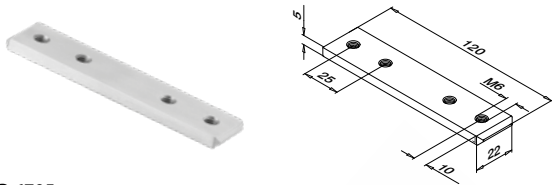
Cut	45°	40°	35°	30°	25°	20°	15°	10°	5°	0°
Outer angle	90°	100°	110°	120°	130°	140°	150°	160°	170°	180°
Distance to edge	30,5	30,0	29,5	29,0	28,5	28,0	27,5	27,0	27,0	26,5

DOWNWARDS

Cut	0°	5°	10°	15°	20°	25°	30°	35°	40°	45°
Inner angle	180°	170°	160°	150°	140°	130°	120°	110°	100°	90°
Distance to edge	26,5	26,5	26,0	26,0	25,5	25,5	25,0	24,5	24,5	24,0

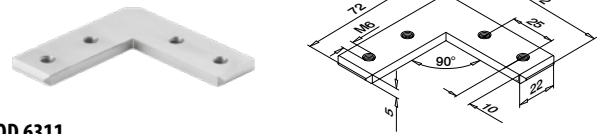


Connectors



MOD 6795

Aluminium	Mill finish			€/ pc.
166795-339	QS-261	376	2	6,20



MOD 6311

Aluminium	Mill finish			€/ pc.
166311-339	QS-261	376	2	9,45

Premium Glass Handrails

Q-INFO MOD 6311

