

PUSH BUTTON LOCK #8600 "M" F/DOUBLE SLIDING GLASS DOORS

- high quality furniture fittings

SISO DENMARK

MODEL # 8600

Finish

Chrome plated # 14.09.420

Alu finish # 14.09.423

Application

Double sliding glass doors
on alu rails

Accessories

1 lock cylinder \varnothing 22 mm

1 grub screw for fastening

2 metal keys, double entry

Function

Push cylinder to lock

Turn key to unlock

Specification

Zamak house: 28 x 24 x 12 mm

400 key combinations or key alike

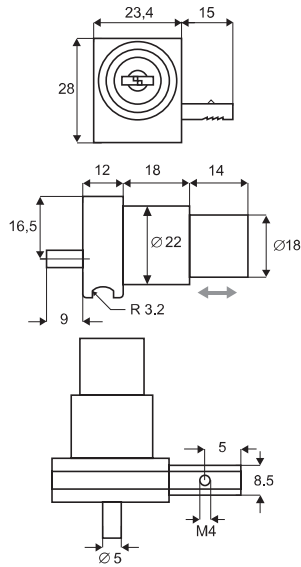
Option:

Master key

Packing:

250 pcs per export carton

25 pcs per box



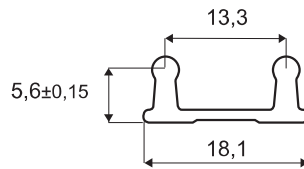
ACCESSORIES

BOTTOM TRACK

Aluminium:

Anodized # 22.26.030

Standard length: 2 metres

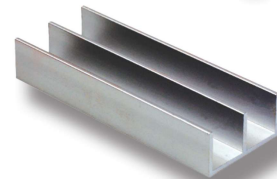
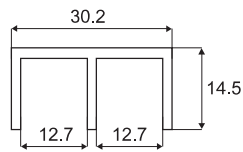


TOP E-TRACK

Aluminium:

Anodized # 22.26.010

Standard length: 2 metres



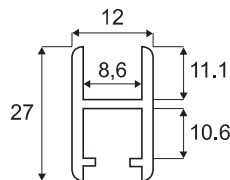
GLASS H-RAIL

Aluminium:

Anodized # 22.26.020

Standard length: 2 metres

For 5 - 6 mm glass thickness

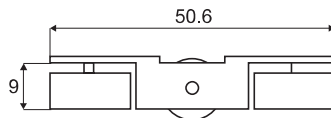


TROLLEY

w/Nylon Wheels

Nickel plated # 22.26.040

Load capacity: 3 kg



U-SPLINE PVC

Rolls of 100 mts

22.26.060



SILENCER

Plastic, clear

Bags of 100 pcs

22.26.070



END CAP ZAMAK

Chrome plated

Alu finish

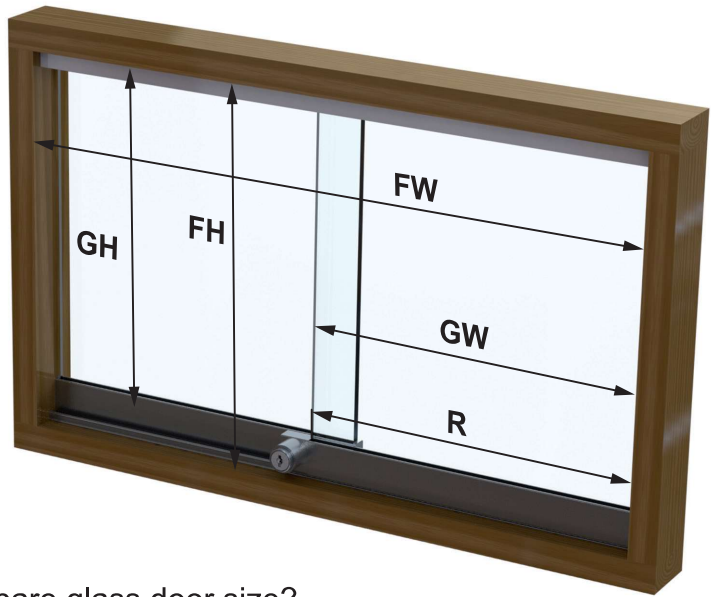
22.26.050

22.26.049

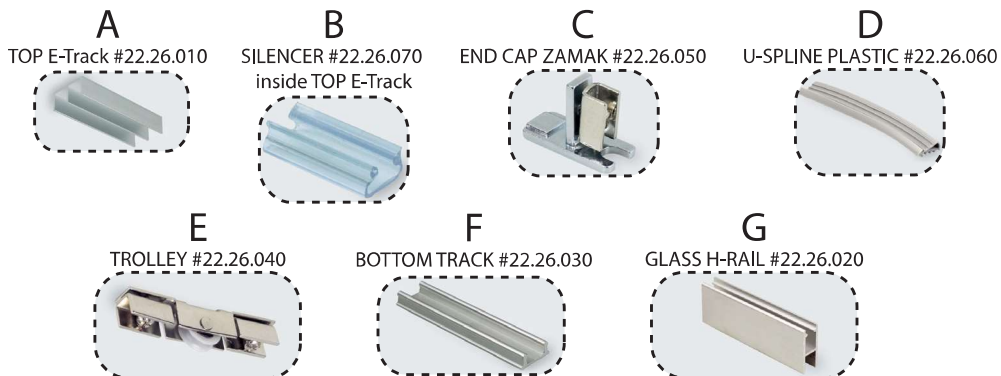
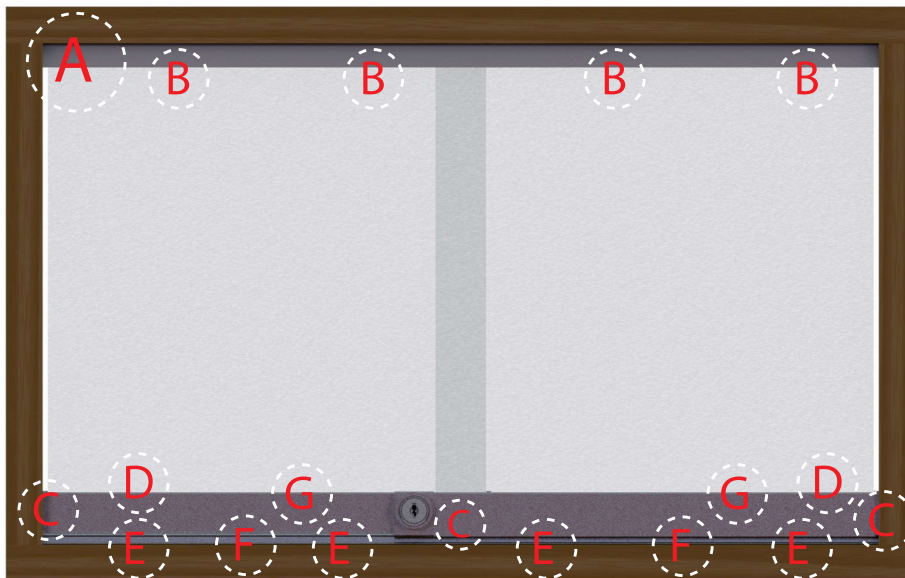
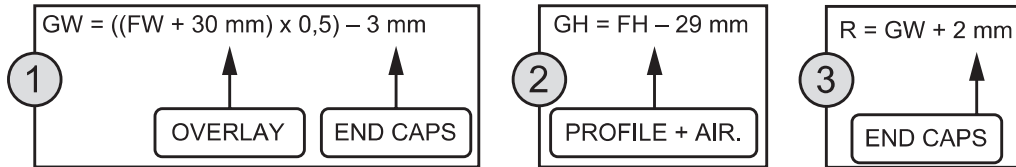


SYSTEM #8600

FW = Frame width (inside measurement)
 GW = Glass width
 FH = Frame height (inside measurement)
 GH = Glass height
 R = Rail length



How to prepare glass door size?



PUSH BUTTON LOCK #2010 "M" F/DOUBLE SLIDING GLASS DOORS

- high quality furniture fittings



MODEL #2010

Finish

Alu finish	# 14.09.460
Chrome plated	# 14.09.461
Gold mat plated	# 14.09.463
Gold bright plated	# 14.09.462

Application

Double sliding glass doors
premounted on aluminium frame

Accessories for one set

- 1 cylinder push lock $\varnothing 22$ mm
- 1 universal bottom part
premounted for insertion
into H-rail on left or right side
- 2 grub screws for fastening onto the h-rail
- 5 allen keys for every
20 lock sets for tightening the grub
screws
- 2 car keys, double entry

Function

Push cylinder to lock
and turn key to unlock

Specification

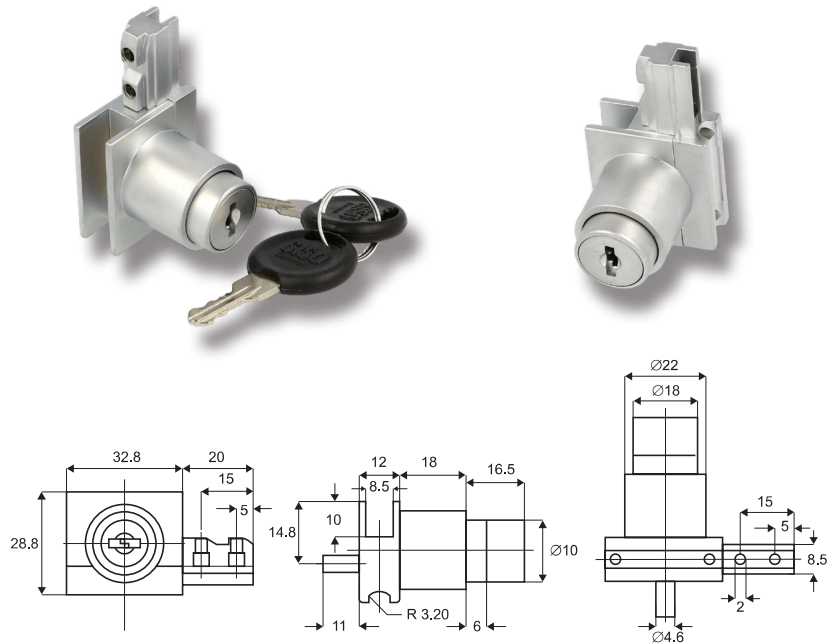
Zamak with 400 key combinations
or key alike

Option

Master key system

Packing

200 pcs per export carton
20 pcs per box



ACCESSORIES

U-SPLINE PVC
22.26.060
Rolls of 100 mts

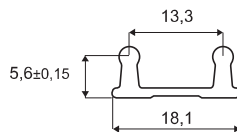
SILENCER
22.26.070
Plastic, clear
Bags of 100 pcs

END CAP ZAMAK
Chrome plated # 22.26.051
Alu finish # 22.26.052



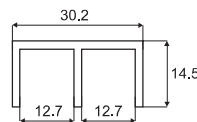
BOTTOM TRACK

Aluminium:
Anodized # 22.26.030
Standard length: 2 metres



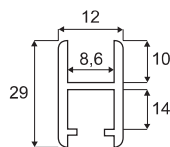
TOP E-TRACK

Aluminium:
Anodized # 22.26.010
Standard length: 2 metres

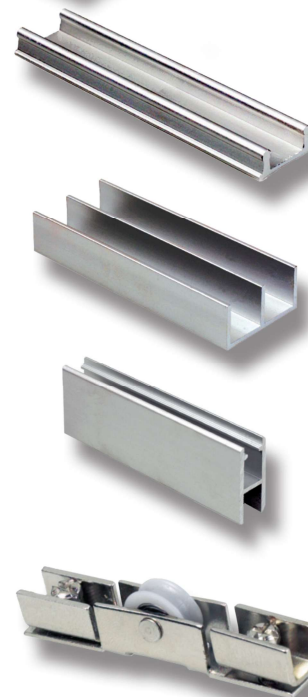
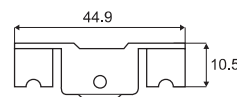


GLASS H-RAIL

Aluminium:
Anodized # 22.26.021
Standard length: 2 metres
For 5 - 6 mm glass thickness



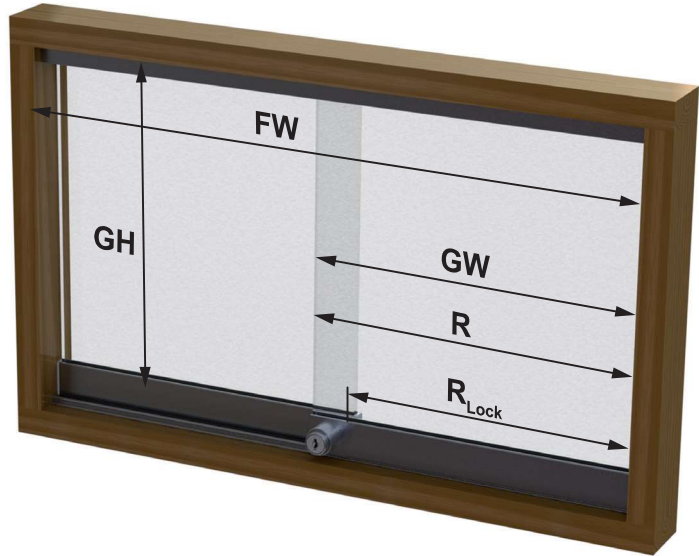
TROLLEY w/Nylon Wheels
Nickel plated # 22.26.041
Load capacity: 3 kg



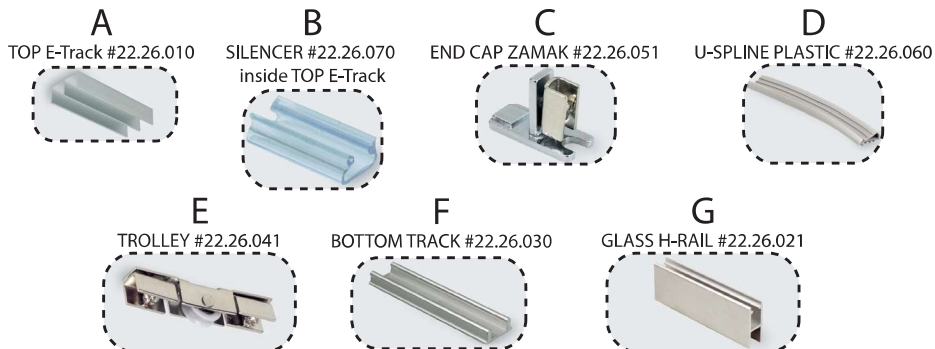
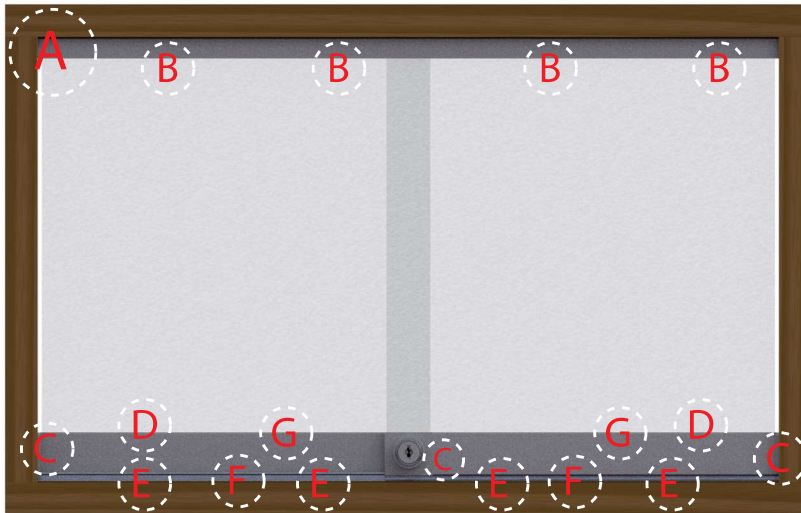
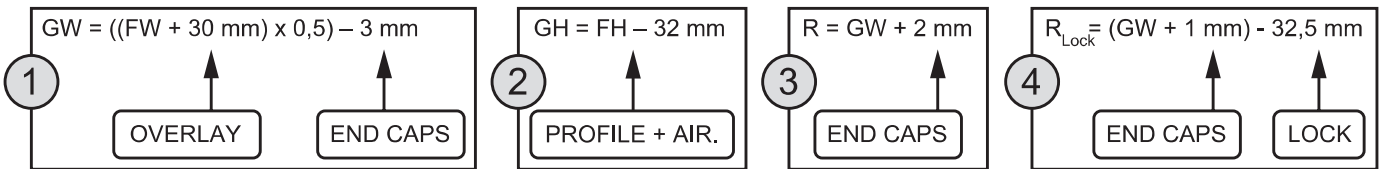
MOUNTING INSTRUCTION F/LOCK #2010

SYSTEM #2010

- FW = Frame width (inside measurement)
- GW = Glass width
- FH = Frame height (inside measurement)
- GH = Glass height
- R = Rail length
- R_{Lock} = Rail length for lock



How to prepare glass door size?



PUSH BUTTON LOCK #2740 "M" W/STRIKER

Application

Double sliding glass doors
Premounted on aluminium frame

Function

Push & turn cylinder with key to lock
& turn key to unlock.
Can be installed into H-rail
on left or right side

Specification

Zamak with 400 key combinations,
key alike or/and master key system

1 set consists of

- 1 cylinder push lock \varnothing 22 mm
with hook pin
- 1 striker
- 2 round SISO metal keys, double
entry
- 1 hex key 2 mm
- 2 grub screws for fastening
onto the H-rail

Lock #2740 w/striker

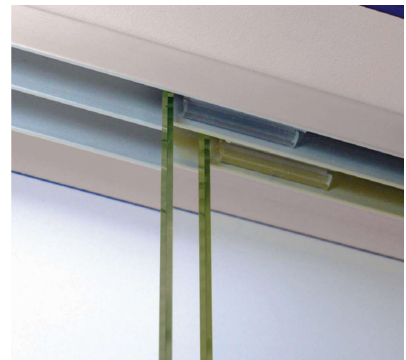
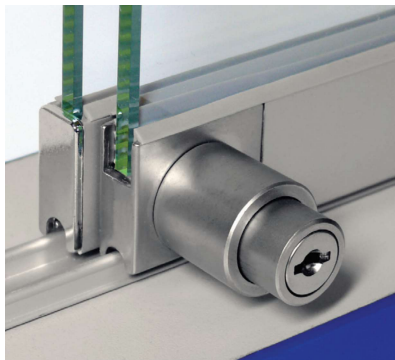
- Alu finish - key to differ # 14.09.440
- Alu finish - key alike # 14.09.441
- Alu finish - w/master key # 14.09.442

Packing

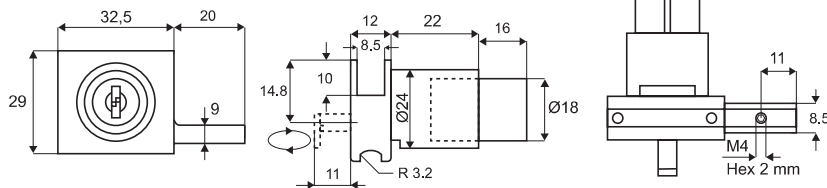
- 150 pcs per export carton
- 15 pcs per box



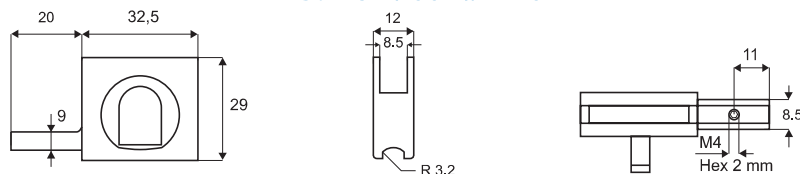
Not for sale in Germany, UK, France & Spain



Lock #2740

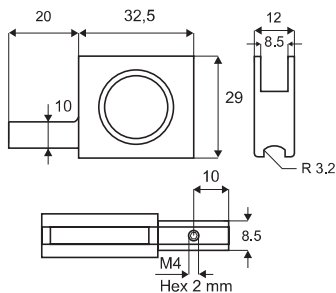


Striker f/lock #2740



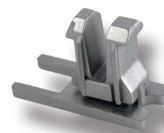
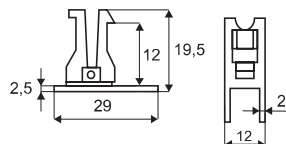
Glass door handle - Plastic

Alu finish # 14.09.445
F/fixing on H-rail w/grub screw



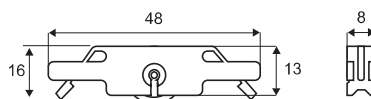
End cap - Plastic

Alu finish # 22.26.053
F/pressing into H-rail



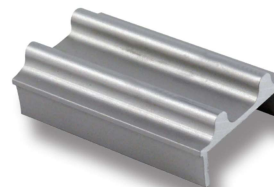
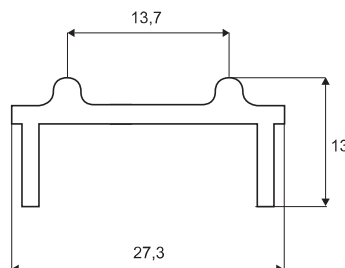
Trolley - w/ball bearing

Zinc plated # 22.26.042
F/fixing on H-rail be use of tool # 22.26.080
Load capacity: 5 kg pr. trolley



Bottom frame track

Aluminium # 22.26.032
Anodized
2 metres length



Tool for fixing trolley

Blue # 22.26.080



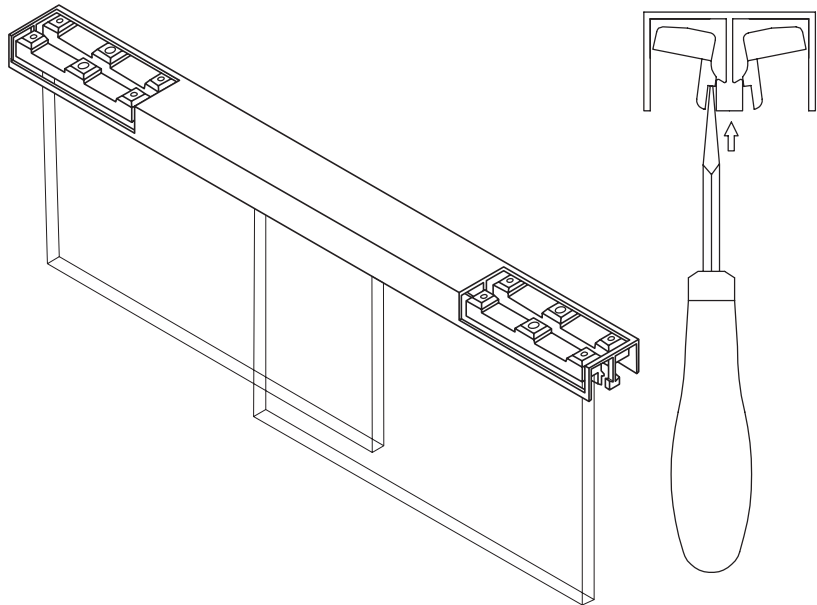
ACCESSORIES F/LOCK #2740 "M"

- high quality furniture fittings

SISO DENMARK

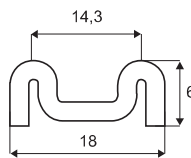
Anti-lift stopper - Plastic

Transparent # 22.26.075
F/pressing into top E-track to prevent lifting of glass



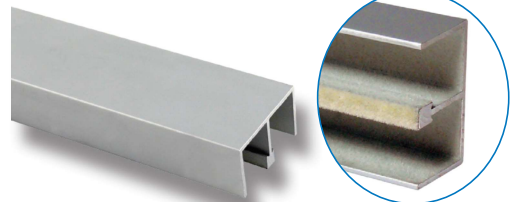
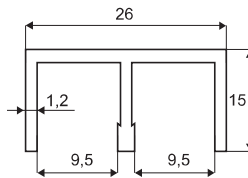
Bottom Track

Aluminium # 22.26.031
Anodized
2 metres length



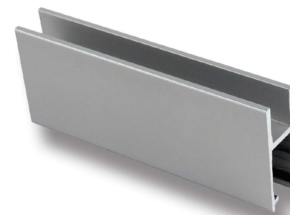
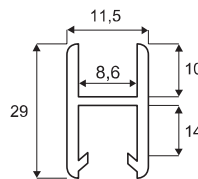
Top E-track with felt

Aluminium # 22.26.011
Anodized
2 metres length



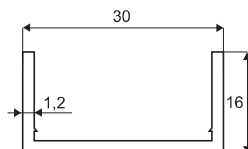
Glass H-rail f/ 5 - 6 mm glass

Aluminium # 22.26.023
Anodized
2 metres length



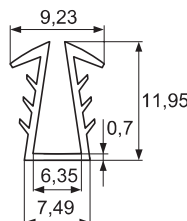
Side & bottom frame track

Aluminium # 22.26.025
Anodized
2 metres length



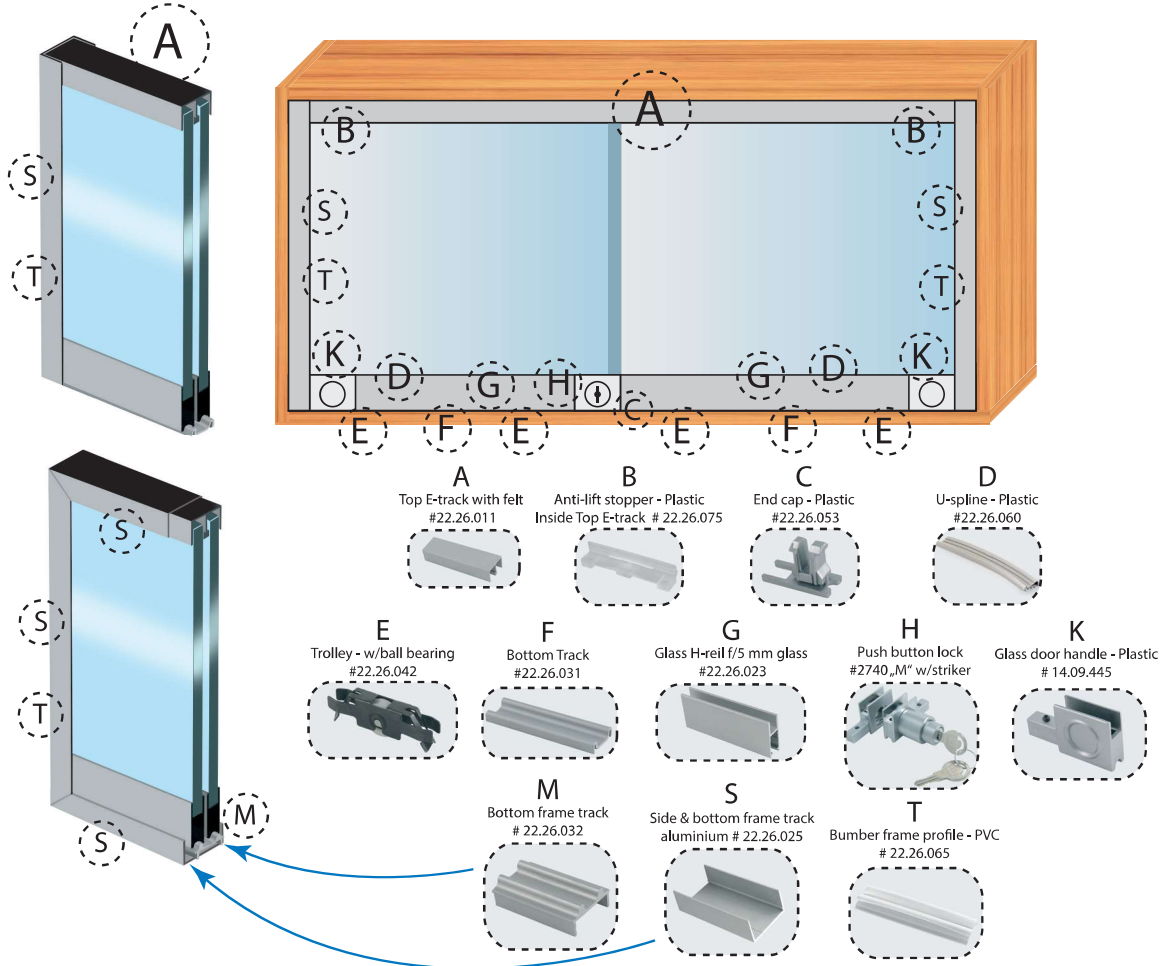
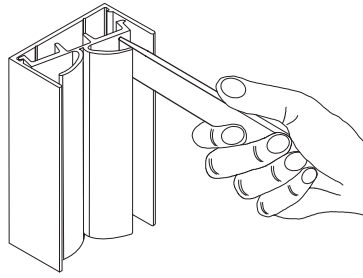
U-SPLINE PVC

Grey color #22.26.060
Rolls of 100 meters



ACCESSORIES F/LOCK #2740 "M"

Bumper frame profile - PVC
Transparent # 22.26.065
2 metres length



#2740 MODEL

With frame and high bottom rail (like on picture):

$$GW = ((W - 2,50 \text{ mm}) + 30 \text{ mm}) \times 0,5$$



With bumpers at the sides deduct 10 mm from the GW result.

$$GH = H - 40 \text{ mm}$$



Without frame and with low bottom rail:

$$GW = (W + 30 \text{ mm}) \times 0,5$$



With bumpers at the sides deduct 10 mm from the GW result.

$$GH = H - 32 \text{ mm}$$



W = Inside width of frame

GW = Glass width

H = Inside height of frame

GH = Glass height

