

A dark, moody photograph of a shower system. The background is a glass shower door covered in numerous water droplets of various sizes. In the foreground, a metallic shower handle and a vertical support bar are visible, partially obscured by the water droplets. The lighting is dramatic, highlighting the textures of the metal and the glass.

OXIDAL
your_project_partner

Sistemi
doccia

Shower
systems



**Sistema scorrevole
per doccia**

Sliding system
for shower doors



Adatto a vetri con spessore 8 mm. Possibilità di ancoraggio laterale a muro o a vetro.

Larghezza massima vano 2000 mm.

Il vetro fisso non richiede lavorazioni e lo spazio ridotto tra anta e fisso consente di evitare l'installazione di guarnizioni. Il kit accessori art. 490 viene fornito senza fermi e con guida a pavimento doppia ridotta, è possibile integrare il sistema con fermi laterali e sostituire la guida di fissaggio per consentire l'installazione del profilo di fissaggio a 'U' Art. 344 a pavimento abbinato al profilo di copertura Art. 345.

Suitable for glass with 8 mm thickness. Possibility of lateral fixing on wall or glass.

Maximum width 2000 mm.

Fixed glass doesn't requires holes or notches and reduced space between door and fixed panels avoids using of gaskets.

Kit art. 490 is supplied without stops and with small double bottom guide, it is possible to integrate the system with side stops and replace the small double bottom guide to allow the installation of the 'U' profile Art. 344 on the floor combined with the covering profile Art. 345.



Applicazione standard
anta + fisso
Standard application
door + fixed glass

Anta + fisso laterale
con fissaggio vetro-muro
Door + fixed glass installation
glass to wall

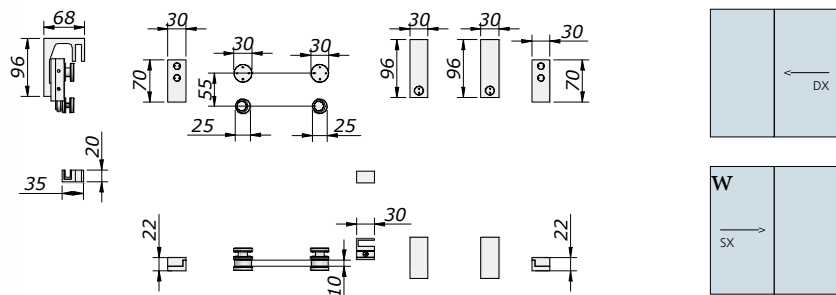
Anta + fisso laterale
con fissaggio vetro-vetro
Door + fixed glass installation
glass to glass

Doppia anta
+ fisso laterale ad angolo
Corner double door
+ fixed glass

Anta + fisso
per installazione sopra-vasca
Door + fixed glass
for installation on bathtub

#1	#2	#3	#4	#5
No. 01 Art. 490	No. 01 Art. 490	No. 01 Art. 490	No. 02 Art. 490	No. 01 Art. 490
No. 01 Art. 491	No. 01 Art. 491	No. 01 Art. 491	No. 02 Art. 491	No. 01 Art. 491
No. 01 Pomolo/Knob	No. 01 Art. 492	No. 02 Art. 492	No. 02 Pomolo/Knob	No. 01 Pomolo/Knob
	No. 01 Pomolo/Knob	No. 01 Pomolo/Knob		

art. 490



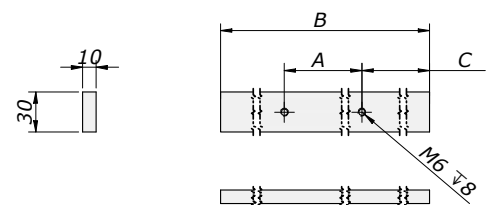
Kit accessori per doccia con anta scorrevole e fisso laterale
(comprende: 2 fissaggi laterali, 2 coppie di borchie, 2 supporti per barra scorrevole, 1 guida inferiore)
Kit for sliding shower door and lateral fixed glass (including: 2 lateral connections, 2 couple of bosses, 2 supports for sliding bar, 1 bottom guide)

	argento/silver	crom./chro.	crom.sat/chro. mat	arg.brill/bright silv.	oro luc./bright gold	nero/black
Porta sulla destra/Door on the right	N-0490-A-DX	N-0490-C-DX	N-0490-I-DX	N-0490-D-DX	N-0490-L-SX	N-0490-N-DX
Porta sulla sinistra/Door on the left	N-0490-A-SX	N-0490-C-SX	N-0490-I-SX	N-0490-D-SX	N-0490-L-SX	N-0490-N-SX

art. 491



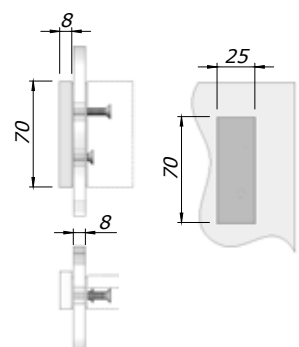
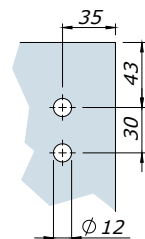
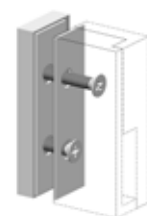
codice/code	A inter./hole dist.	B lungh./Length
N-0491-090	mm 250	mm 900
N-0491-120	mm 250	mm 1200
N-0491-150	mm 500	mm 1500
N-0491-200	mm 500	mm 2000



Barra scorrevole
Sliding bar

lunghezza/length	argento/silver	cromato/chrome	cromato sat/chrome mat	arg.brill/bright silv.	oro lucido/bright gold	nero/black
900 mm	N-0491-A-090	N-0491-C-090	N-0491-I-090	N-0491-D-090	N-0491-L-090	N-0491-N-090
1200 mm	N-0491-A-120	N-0491-C-120	N-0491-I-120	N-0491-D-120	N-0491-L-120	N-0491-N-120
1500 mm	N-0491-A-150	N-0491-C-150	N-0491-I-150	N-0491-D-150	N-0491-L-150	N-0491-N-150

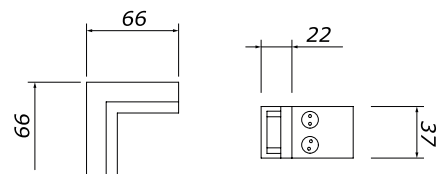
art. 492



Piastra di fissaggio a vetro
Lateral fixing plate on glass

argento/silver	cromato/chrome	cromato sat/chrome mat	argento brillante/bright silver	oro lucido/bright gold	nero/black
N-0492-A	N-0492-C	N-0492-I	N-0492-D	N-0492-L	N-0492-N

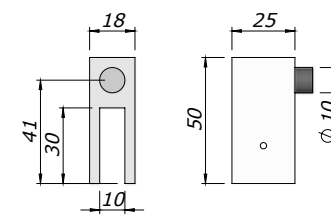
art. 493



Connessione ad angolo
Corner connection

	argento/silver	crom./chro.	crom.sat/chro. mat	arg.brill/bright silv.	oro luc./bright gold	nero/black
Porta sulla destra/Door on the right	N-0493-A-DX	N-0493-C-DX	N-0493-I-DX	N-0493-D-DX	N-0493-L-SX	N-0493-N-DX
Porta sulla sinistra/Door on the left	N-0493-A-SX	N-0493-C-SX	N-0493-I-SX	N-0493-D-SX	N-0493-L-SX	N-0493-N-SX

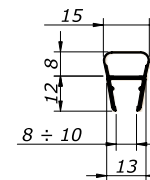
art. 494



Fermo laterale
Lateral stop

argento/silver	N-0494-A
cromato/chrome	N-0494-C
cromato satinato/chrome mat	N-0494-I
argento brill./bright silver	N-0494-D
oro lucido/bright gold	N-0494-L
nero/black	N-0494-N

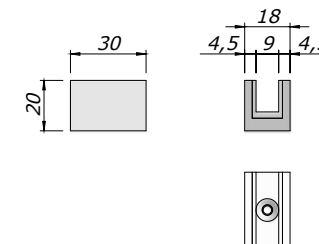
art. 338



Guarnizione palloncino per spess. 8-10 mm lung. mm 2200
Ball gasket profile for 8-10 mm thickness length mm 2200

art. 338	trasparente/transparent
lung./ length 2200	N-0338-T

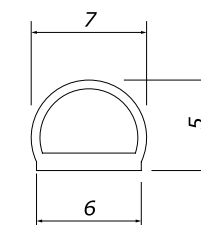
art. 495



Guida inferiore singola
Single bottom guide

argento/silver	N-0495-A
cromato/chrome	N-0495-C
cromato satinato/chrome mat	N-0495-I
argento brill./bright silver	N-0495-D
oro lucido/bright gold	N-0495-L
nero/black	N-0495-N

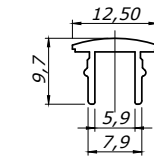
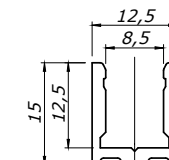
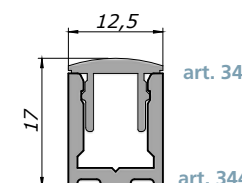
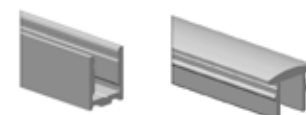
art. 755



Guarnizione palloncino adesiva
Self adhesive ball gasket

art. 755	trasparente/transparent
lung./ length 3000	N-0755-T

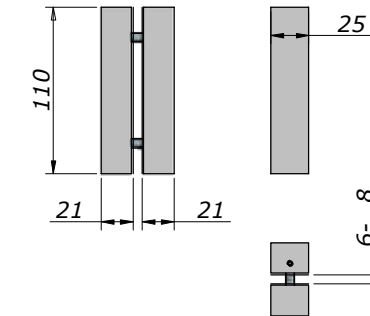
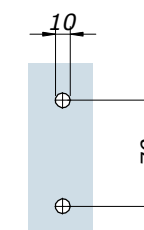
art. 344 / 345



Profilo a "U" per spess. 8 mm / Profilo di copertura per art. 344 (lung. 2500 mm)
"U" profile for 8 mm thickness / Cover profile for art. 344 (length 2500 mm)

argento/silver	cromato/chrome	cromato sat/chrome mat	argento brillante/bright silver	oro lucido/bright gold
N-0344-A	N-0344-C	N-0344-I	N-0344-D	N-0344-L
N-0345-A	N-0345-C	N-0345-I	N-0345-D	N-0345-L

art. 32



Maniglia quadrata piccola
Little square handle

argento/silver	cromato/chrome	crom. sat/chro. mat	arg.brill./bright silver	oro luc./bright gold	nero/black	bronzo/bronze	oro/gold	RAL 9010
N-0032-A	N-0032-C	N-0032-I	N-0032-D	N-0032-L	N-0032-N	N-0032-B	N-0032-O	N-0032-V