



maars LIVING WALLS®



Panorama Slim

Index

Panorama Slim

- Intro
- USP's
- Materials
- Specifications
- Compare with Panorama standard and Horizon double
- Connections
- Exceptions
- Technical details
- Finishes
- Stability
- Install / ordering
- Curved





Intro

- Slim Profiles
- High Acoustics
- Aesthetic
- Room for intolerances

The Panorama Slim. This new version of Panorama offers everything the familiar Panorama wall system offers, with slimmer profiles.

Panorama Slim is a solution where we compromise between a slim profile that meets aesthetics and a profile where there is still room for taking up intolerances.

The profile is nominally deployed at 10mm. With a clearance at the top of 0 - 17 mm and at the bottom of 3mm - 20 mm. With the profiles you can achieve a slim design but also include extreme intolerances in the profiles á system.

The Panorama Slim is a good alternative in 100mm walls. It has slim lining and high acoustics. The Panorama Slim can be combined with standard Panorama details, for example when a sliding door is needed.

The profiles that are used for Panorama Slim, can also be connected with String² with a 0mm joint.

The Panorama Slim, where high aesthetics, acoustics and an easy installation method meet!



USP's

- Combined with 100mm | 4" walls
 - Connects with String²
 - Connects with 100mm doors like flush glazed doors
- Slim lining
 - Profile height is 35mm | 1"-3/8 top
 - Profile height is 35mm | 1"-3/8 bottom
 - Recess 10mm | 3/8" top and bottom
- High acoustics
 - Tested $R_w = 50\text{dB}$ and 51STC
 - with 2x 66a2 acoustical laminated glass
- Flexible
 - Combine Slim with standard

Materials

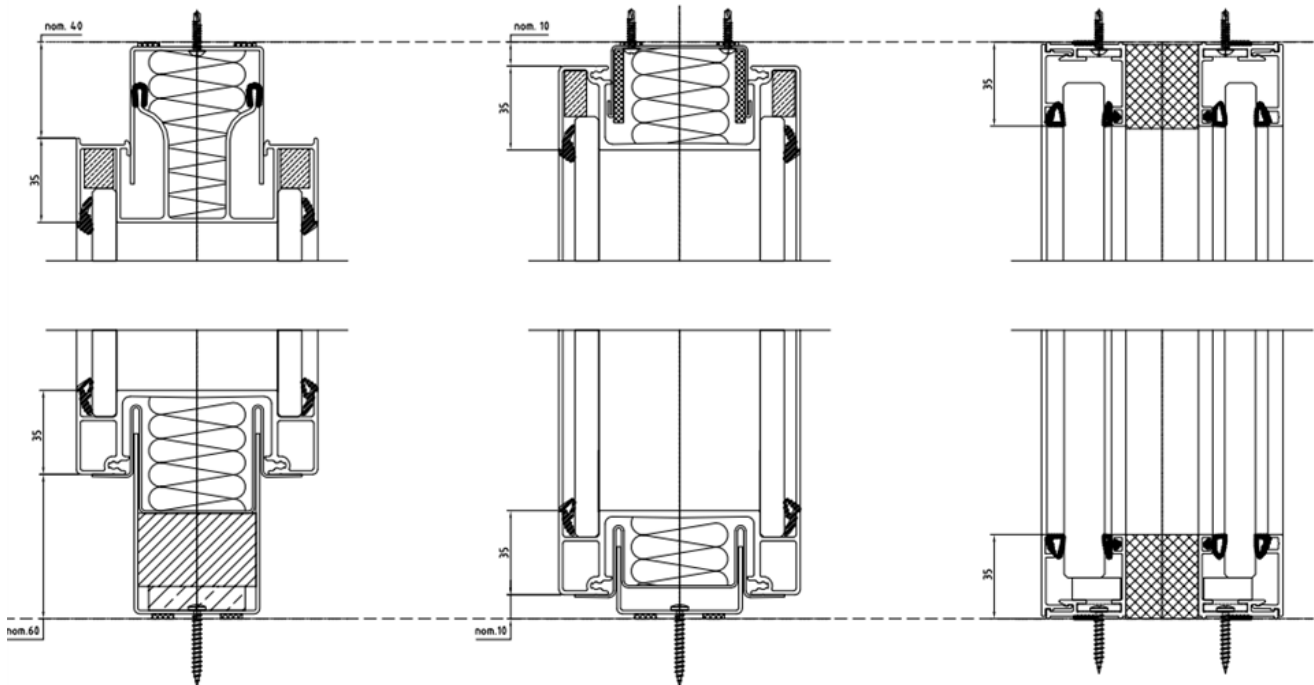
- Aluminum Panorama profiles top-, bottom- and vertical connections
- Steel U-profiles, top and bottom
- Steel leveling profile, bottom



Specifications

- Max wall-height
 - Max. height panel thickness 12mm | 1/2inch: 3400mm | 11'-1"7/8
 - Max. height panel thickness 10mm | 3/8inch: 2800mm | 9'-2"1/4
- Module width 600, 900, 1200mm | 23"5/8, 35"7/16, 47"1/4. (or custom)
- Sound insulation – up to Rw 50db (51 STC) (= 2x acoustical laminated glass 12,8mm)
- Nominal recess 10mm top and bottom
- Tolerances
 - top -10 +7
 - bottom -7 +10

Compare with Panorama standard and Horizon double



Panorama standard	Panorama slim	Horizon Double
Recess ceiling 40mm 1"-9/16	Recess ceiling 10mm 3/8"	-
Recess floor 40 / 60mm 1"-9/16 / 2"-3/8	Recess floor 10mm 3/8"	-
Profile height 35mm 1"-3/8	Profile height 35mm 1"-3/8	Profile height 35mm 1"-3/8
Install tolerances ceiling +/- 13mm 1/2"	Install tolerances ceiling -10/ +7mm -3/8" / +1/4"	Install tolerances ceiling +/- 8mm 5/16"
Install tolerances floor +/- 13mm 1/2"	Install tolerances floor -7/ +10mm -3/8" / +1/4"	Install tolerances floor +/- 8mm 5/16"
Up to 47dB/STC 47	Up to 50dB/STC 51	Up to 51dB/STC 51
\$\$	\$\$	\$\$\$

Connections

Connections within Panorama Slim:

- T- Connections
- 90 degree and other corners
- Endposts

All connections to String² and Metaline100 package are possible. Underneath the overview the consequences per situation.

Panorama

- Ceilingtrack < 40mm = slim variable ceilingtrack
- Floortrack < 30mm = slim variable floortrack

String²/Metaline100

- Ceilingtrack < 20mm = slim variable ceilingtrack
- Floortrack < 30mm = slim variable floortrack

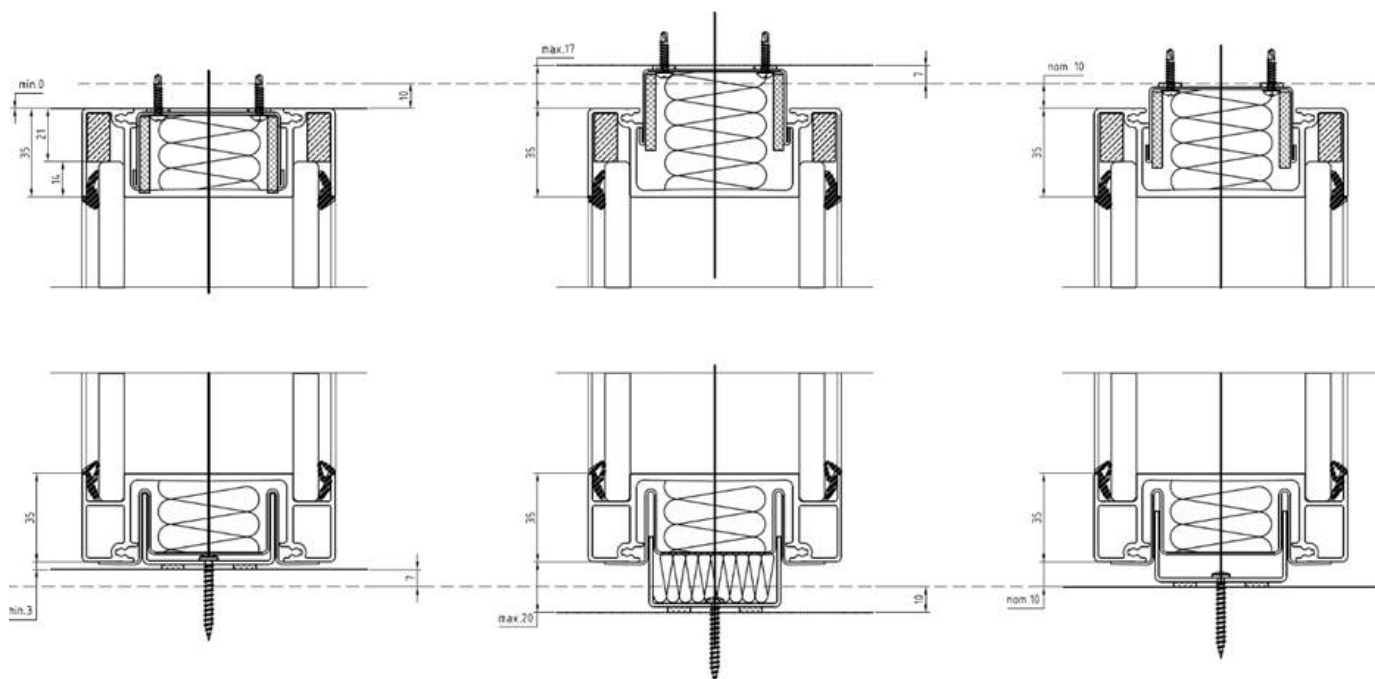
Exceptions

- Only double glazed, not single glazed
- Connections to String² package with 0-Joint. 5mm joints not possible with recess of 10mm.
- Monoblocks can't be combined with (variable) slim ceiling tracks.
- No slidingdoors with Slim ceilingtrack.

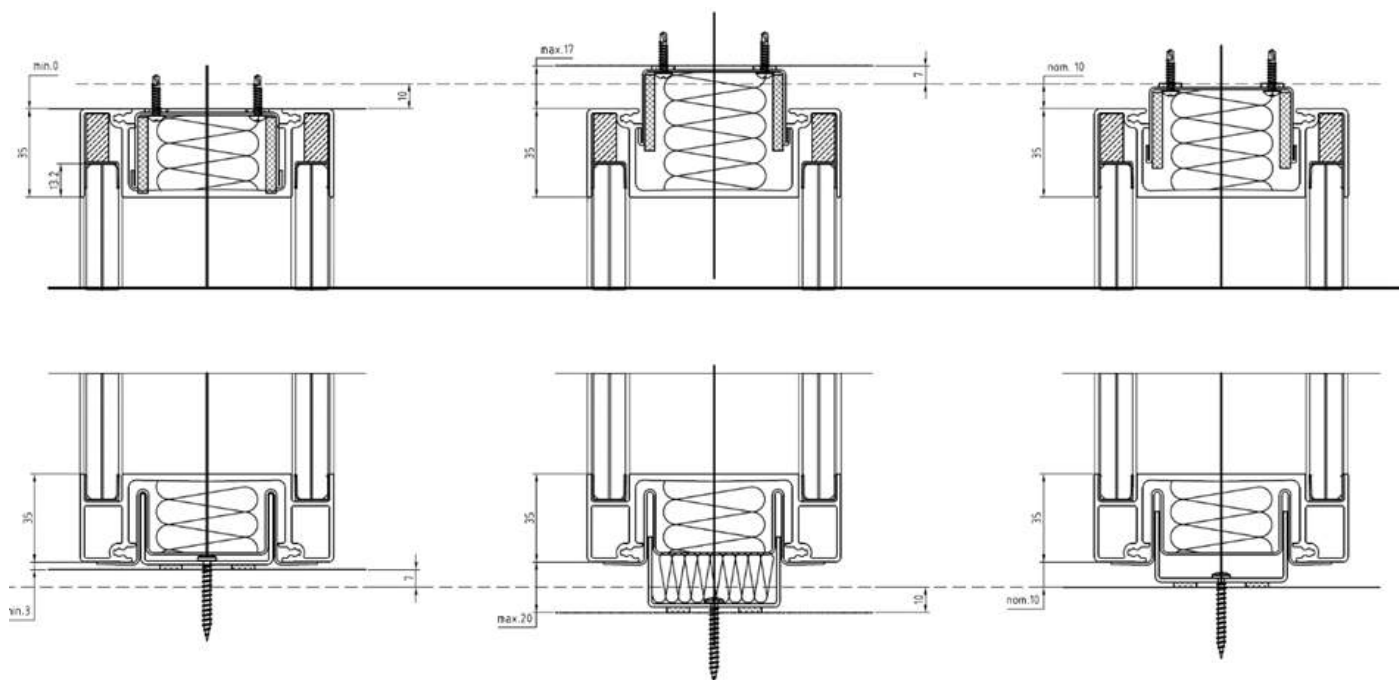


Technical details

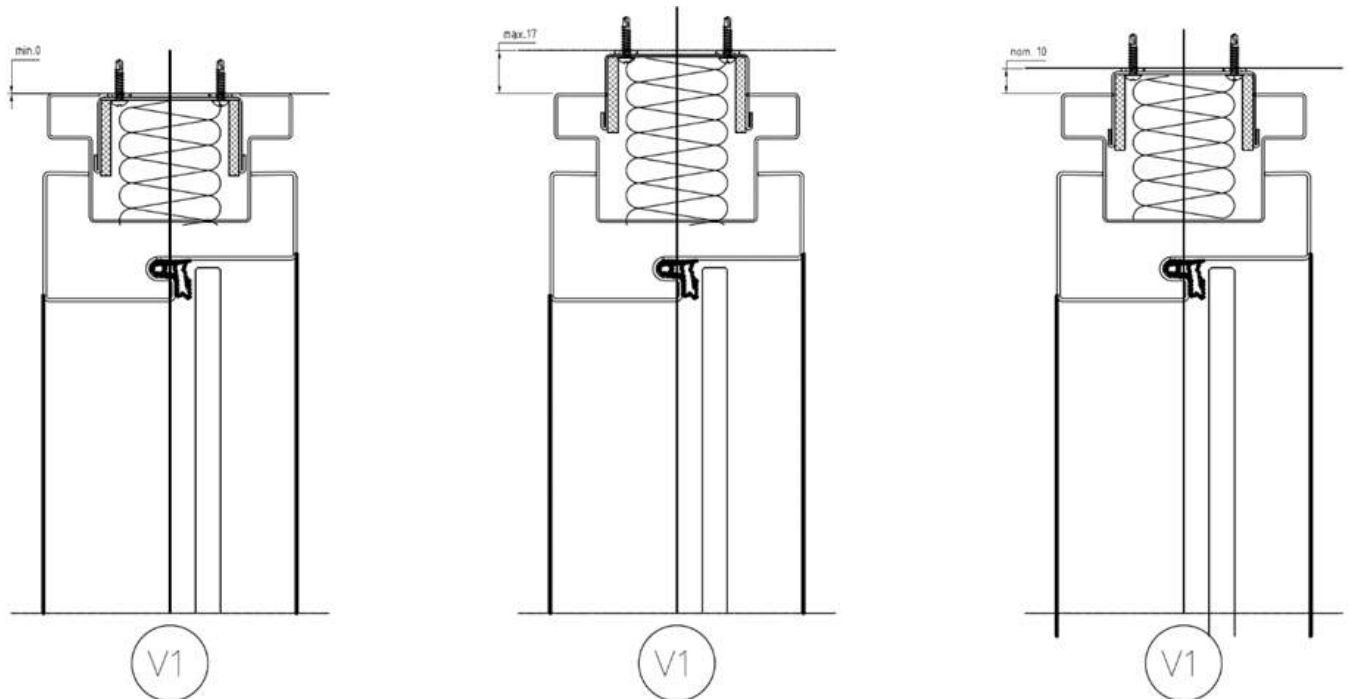
Panorama Slim with toughened glass and rubber gaskets.



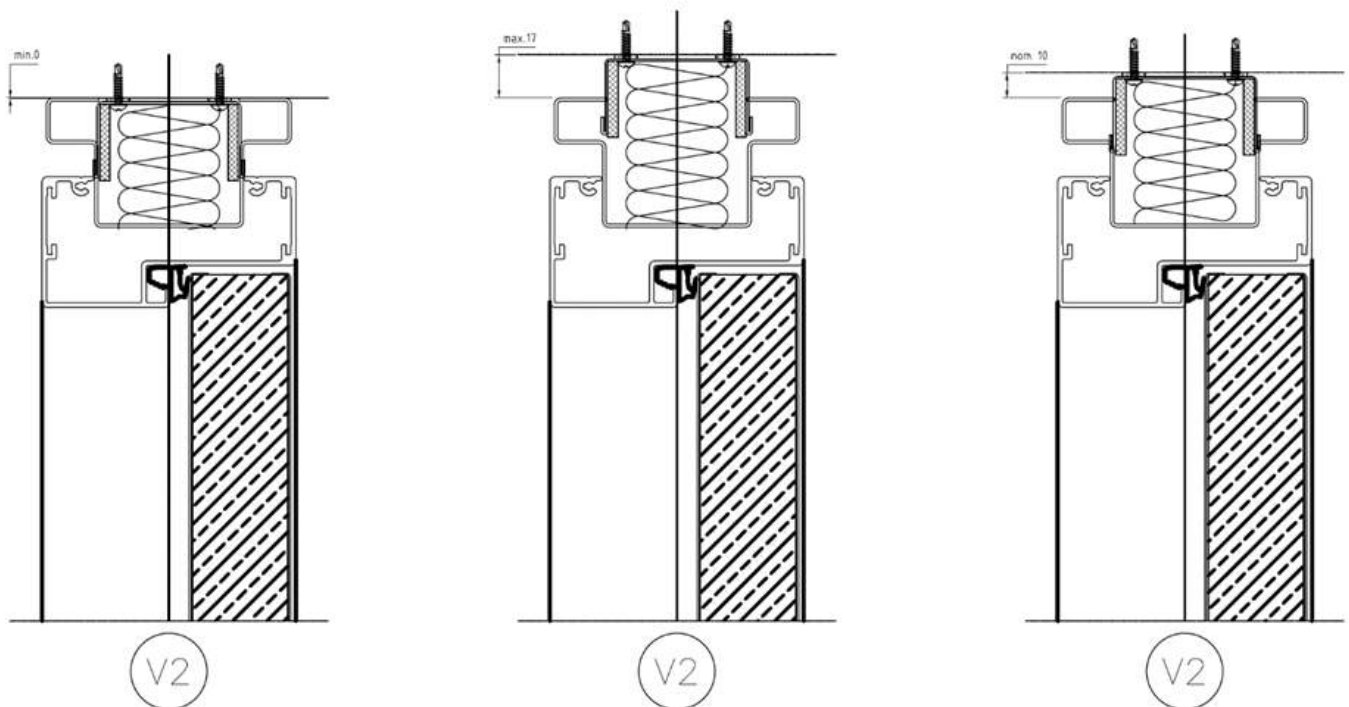
Panorama Slim with laminated glass and glass beading.



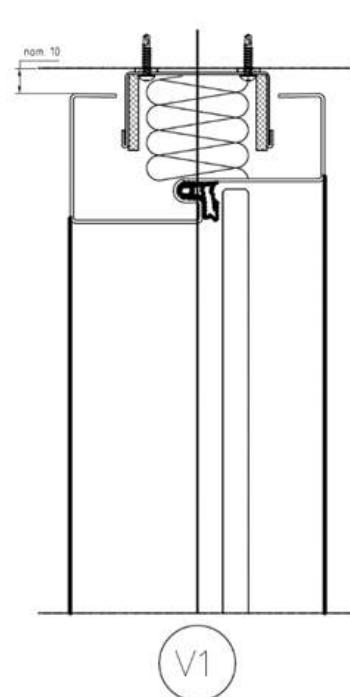
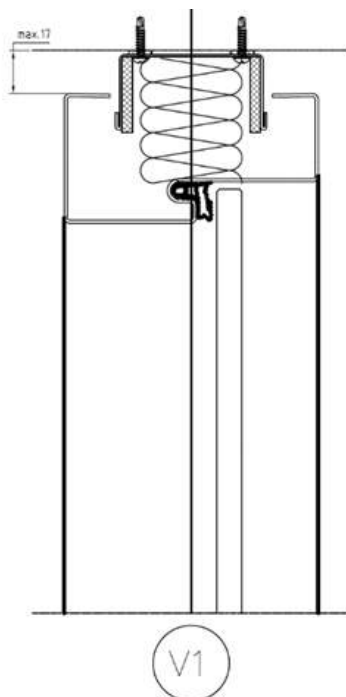
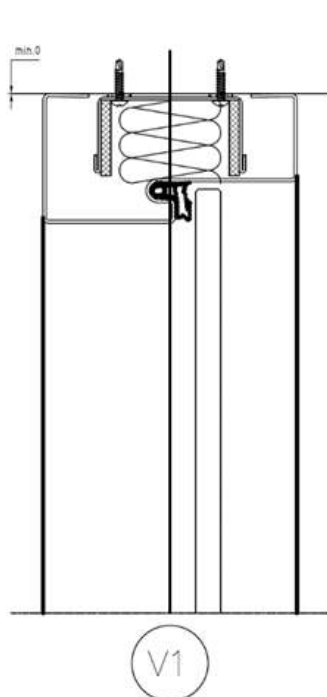
Panorama Slim ceiling track with steel doorframe and spacer track



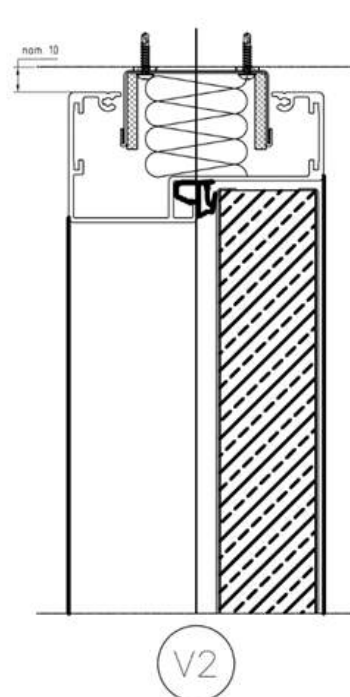
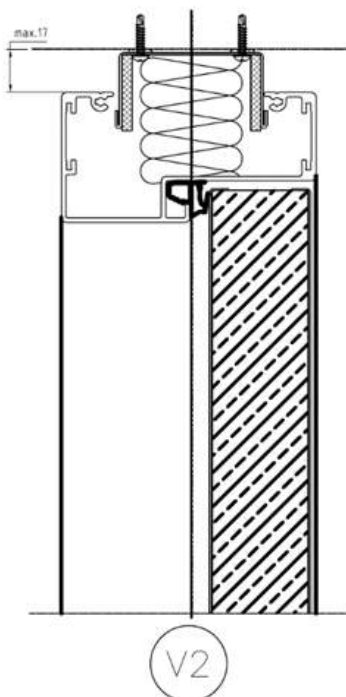
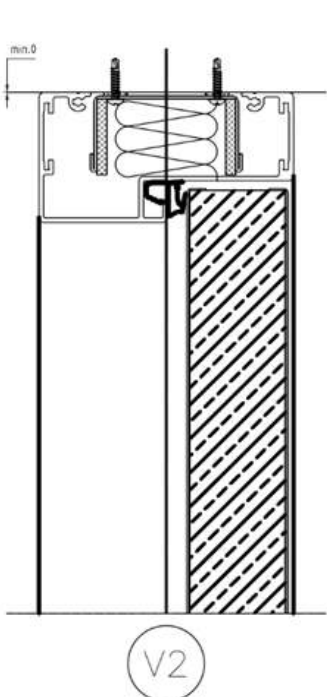
Panorama Slim ceiling track with aluminum doorframe and spacer track



Panorama Slim ceiling track with steel doorframe



Panorama Slim ceiling track with aluminum doorframe





Finishes

Powdercoat. Go to Documentations on Wall-E and choose colors and finishes to find the Maars standard colors in a complete overview.

Stability

Test have been executed with toughened glass panels

	300 Nm 2x10 mm	300 Nm 2x12 mm	500 Nm 2x10 mm	500 Nm 2x12 mm	610 Nm 2x12 mm
600mm module width	✓	✓			
900mm module width	✓	✓		✓	
1200mm module width	✓	✓		✓	✓



Install / ordering

The method of install is similar as the method of install of Standard Panorama.

@@@

Exceptional situations – one module between two doorframes.

Short technical panel next to doorframe - switches

Curved

The curved version of Panorama slim needs be tested first and is not yet developed.

Contact TS for more information what is needed in this situation.

